



Fall 2013 Catalog



ATLONA[®] 10

TEN YEAR CELEBRATION

We're celebrating 10 years of product quality, business opportunity, and outstanding support.

Since 2003 Atlona has been providing high-quality, innovative, and reliable AV and IT connectivity solutions at competitive prices, followed with exceptional support.

Table of Contents

| | |
|----------------------------|----|
| Atlona Advantage | 5 |
| What's New | 6 |
| Solutions and Applications | 8 |
| Switchers | 26 |
| Distribution Amplifiers | 50 |
| Extenders | 58 |
| Converters and Scalars | 76 |
| Audio | 86 |
| Test Equipment | 90 |
| Cables and Adapters | 94 |



Atlona is Proud

Atlona is proud to offer solutions designed in partnership with industry professionals to provide the features they need, not the ones they don't.

Through focused product design and engineering, we aim to overcome the critical challenges and reduce the complexity of residential and commercial applications. Our product development team stays focused on the real world problems our partners in the AV industry have to solve every day.

Atlona Advantage

Atlona offers the industry's best services, support and warranties, so you can specify, purchase, and install with confidence.

Atlona 10 Year Limited Warranty

Atlona will repair or replace defective electronics or hardware for up to ten years from date of purchase.

Atlona **Next Day** Advance Product **Replacement**

Atlona offers US customers free next-day shipment for up to one year if a product is determined to be defective.

Atlona Lifetime Limited Warranty

Atlona will repair or replace defective cables for life.

Atlona 30 Day Customer Satisfaction

Atlona offers a full refund within 30 days of purchase if a product is returned.

Atlona 7 Day/Week Tech Support

Atlona offers technical support from trained and certified experts, all week, year-round.

Atlona Academy

Atlona shares industry expertise via webinars, online training, team training, and more.



web

Visit atlona.com for more complete product information, including our latest catalog, data sheets and specs.

What's New

We're always looking for ways to innovate and improve.



Atlona PRO MXM Modular Matrix Collection

Atlona's customizable, card-based modular matrix switcher collection features an 8 x 8 (Q1, 2014) and a 16 x 16 (Q2, 2014) chassis that house configurable input and output cards. Choose input cards to provide the right interface for any source in the system, and output cards to customize the installation by zone based on distance and control requirements. [model no. AT-PRO-MXM-8].



Atlona HDMI Distribution Amplifier Collection

Atlona's distribution amp for Ultra HD (4Kx2K), ideal for TV showrooms and digital signage with displays demonstrating cutting edge Ultra HD resolution. Cascade up to 8 devices for large systems. See pages 55-56 for product models.



Atlona HDMI Multi-Channel to 2-Channel Audio Converter

Atlona's full-featured multi-channel to stereo audio converter guarantees compatibility between digital audio formats in different zones. Converts multi-channel HDMI audio signal from Blu-ray, set-top box, or game console to stereo audio. [model no. AT-HD-M2C].



Atlona LinkConnect Captive Screw Cable Collection

Atlona's captive screw cables support IR, RS-232, or 2-channel audio, all pre-stripped at the opposite ends for more secure, direct contact with the conductor, and minus the clumsy wire bundles.

See page 96 for c product models.



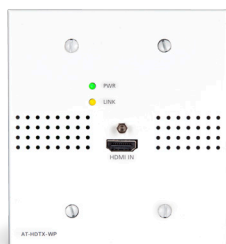
Atlona HDVS Switcher HDBaseT Transmitter

Atlona's HDVS switcher transmitter functions as complete input switcher and display control in a simple system. It allows advanced HDMI display devices to be used with the many VGA computers still in use at distances up to 230 feet. [model no. AT-HDVS-TX].



Atlona HDVS Transmitter Wall Plate

Atlona's HDVS transmitter wall plate enables auto-switching between HDMI and VGA inputs. A sleek wall plate in a simple system that allows advanced HDMI display devices to be used with the many VGA computers still in use at distances up to 230 feet. Use with AT-HDVS-RX shown below for best results. [model no. AT-HDVS-TX-WP].



Atlona HDBaseT Transmitter Wall Plate

Atlona's HDTX transmitter wall plate extends HDMI inputs up to 230 feet (100 meters). A sleek wall plate that allows advanced 4Kx2K sources and control signals to be used with compatible displays. Available with US and UK wall plates. [model no. HDTX-WP].



Atlona HDVS Scaler Receiver

Atlona's HDVS-RX scales video, de-embeds audio, and enables projector control in a simple system that allows advanced HDMI display devices to be used with the many VGA computers still in use. [model no. AT-HDVS-RX].

Solutions

We design solutions with the system in mind. We're always looking for new ways to resolve specific challenges for unique installations.



Small Residential

Atlona's PRO3HD44M matrix switchers bring home media to vivid life in four zones.



Large Residential

Atlona's PRO3HD66M matrix switchers help to simplify multi-room distribution.



Office and Boardroom

Atlona's HDBaseT extender wall plates allow tidier installation for a more professional space.



Government and Military

Atlona's PRO MXM modular matrix collection can be configured for legacy analog and next-generation digital formats.



School and Classroom

Atlona's HDVS extender scaler collection eases the transition from analog to digital.



House of Worship

Atlona's PRO MXM modular matrix collection can be perfectly customized for control, distance, and format.



Digital Signage

Atlona's HDCAT distribution amplifiers offer extended distances to multiple displays.



Rental and Staging

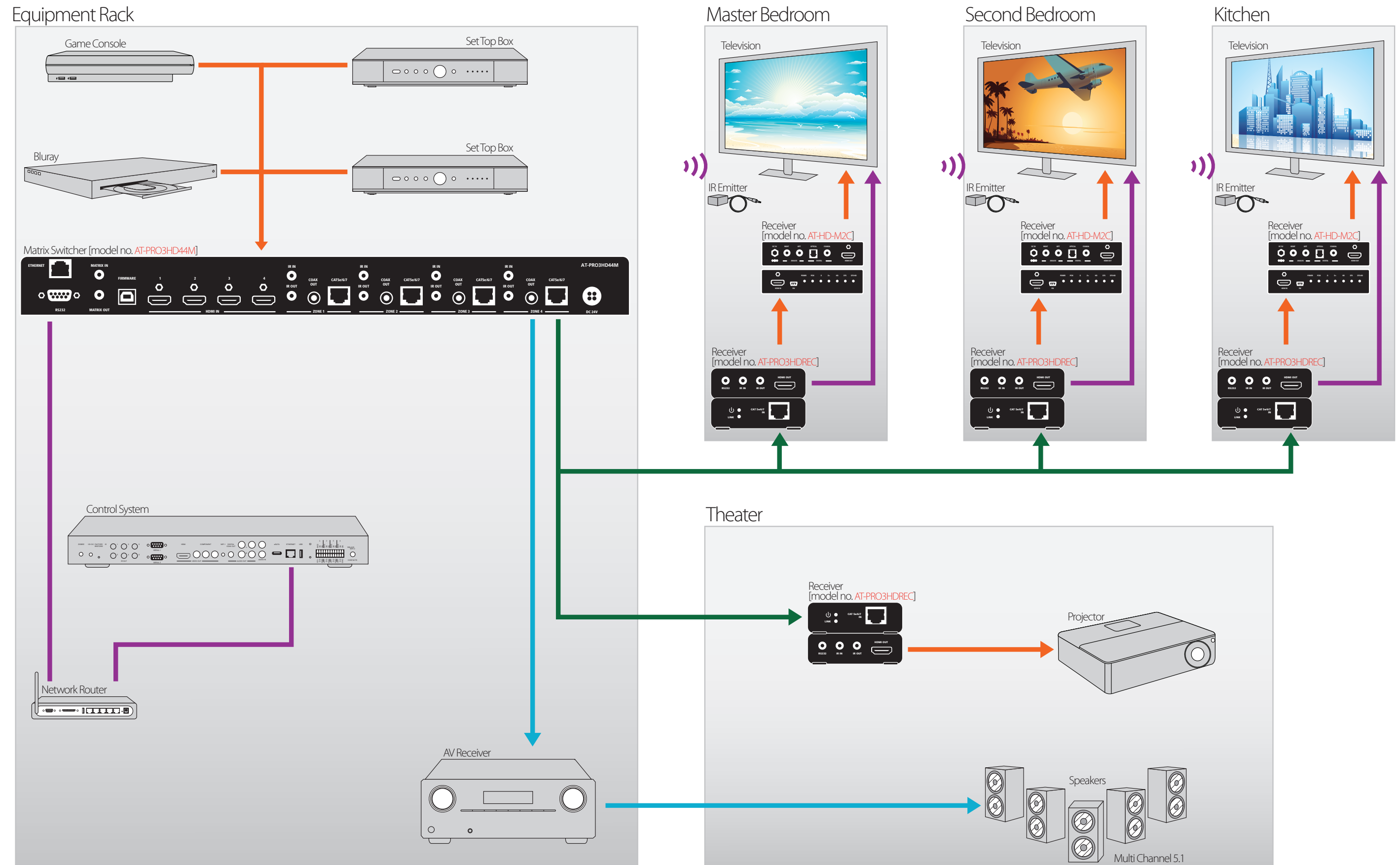
Atlona's ROADNET collection of extenders makes setup and takedown more efficient, yet more secure and reliable too.

Atlona Small Residential Solutions

Right-sized: easy to install, easy to use, and reliable; and more affordable, too, because Atlona engineers focus on features that compact connected homes need, not the ones they don't.

“I was able to install a video system that offered more capabilities and convenience the customer truly appreciated.”



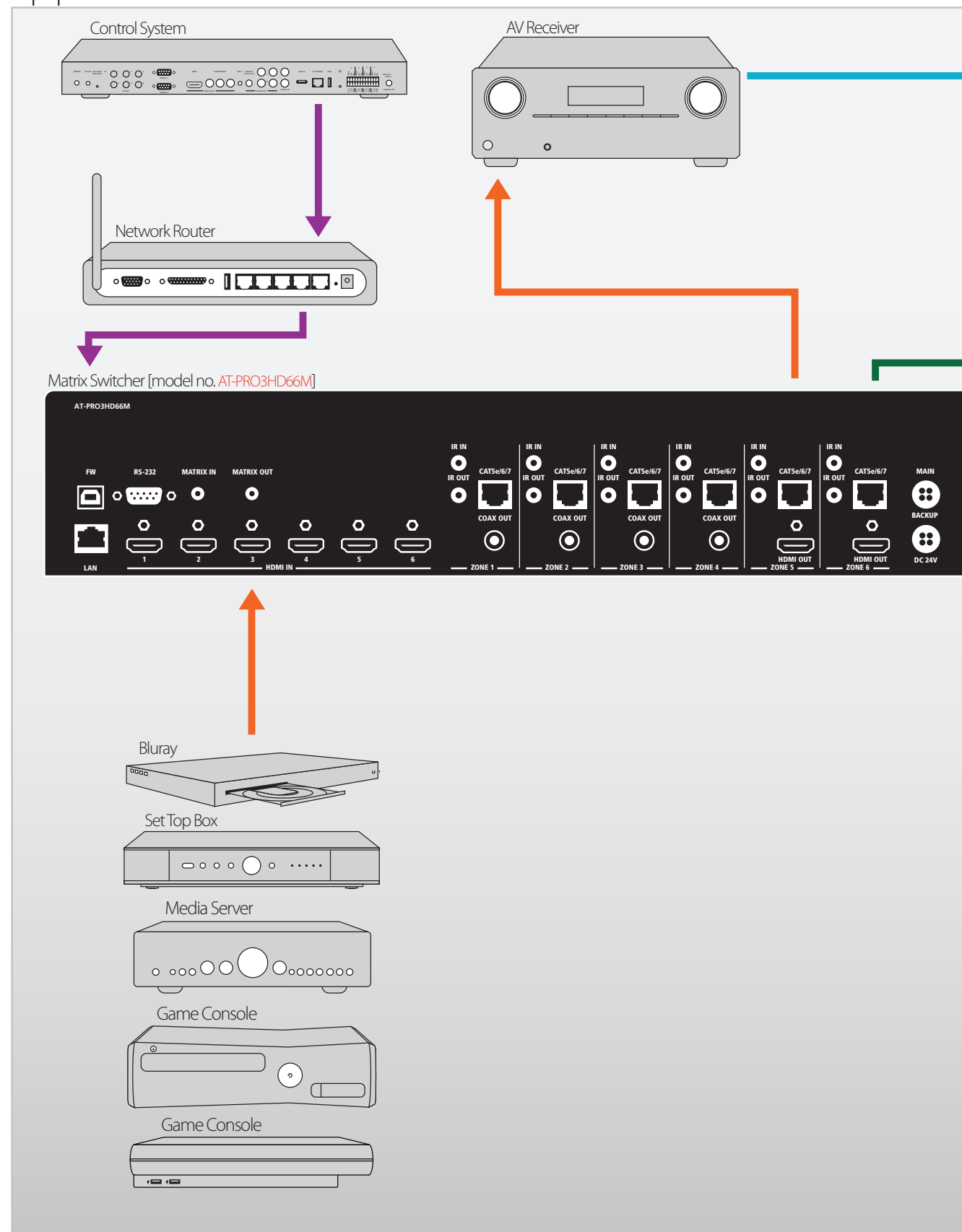


Atlona Large Residential Solutions

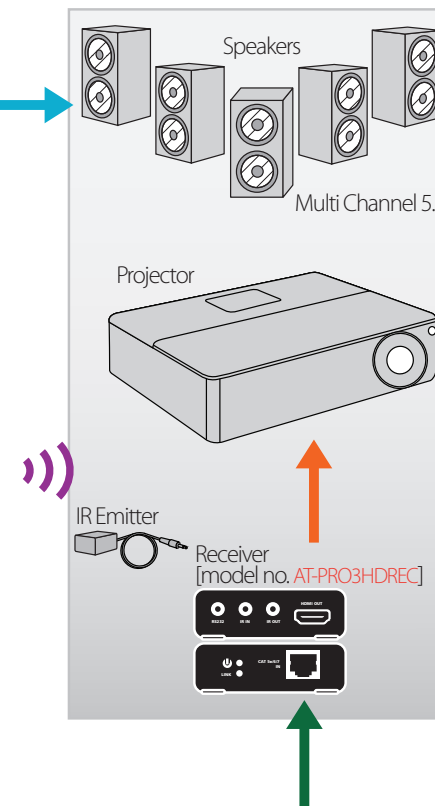
Fully connected: today's luxury homes are more connected than ever, with media distributed across many different spaces, from the kitchen to the home theater, from the patio poolhouse to the kids' bedrooms.

“I try to deliver reliable systems with maximum performance at a fair price to my customers regardless of the size of the project. Atlona has the same goal.”

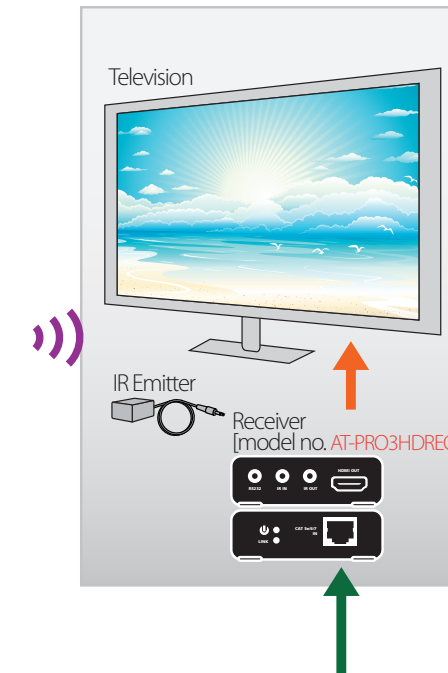
Equipment Rack



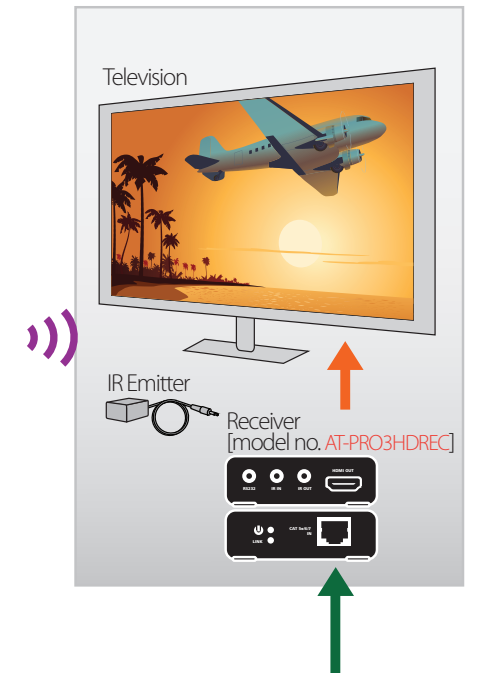
Theater



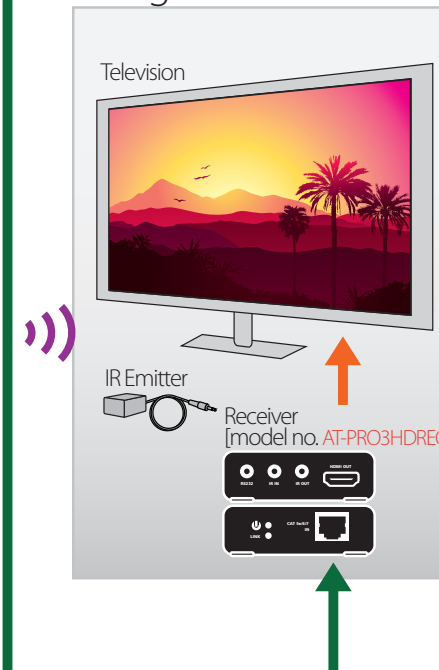
Master Bedroom



Second Bedroom



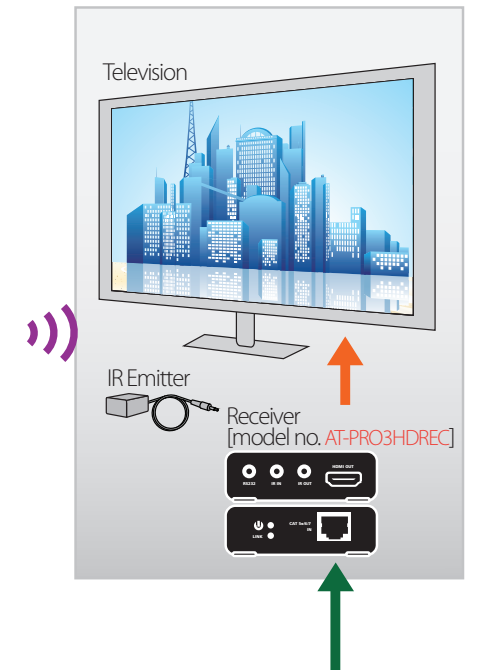
Living Room



Office



Kitchen



Signals

- HDMI
- VGA
- Audio, S/PDIF, 2CH
- Control, RS-232, IR, TCP/IP
- HDBaseT

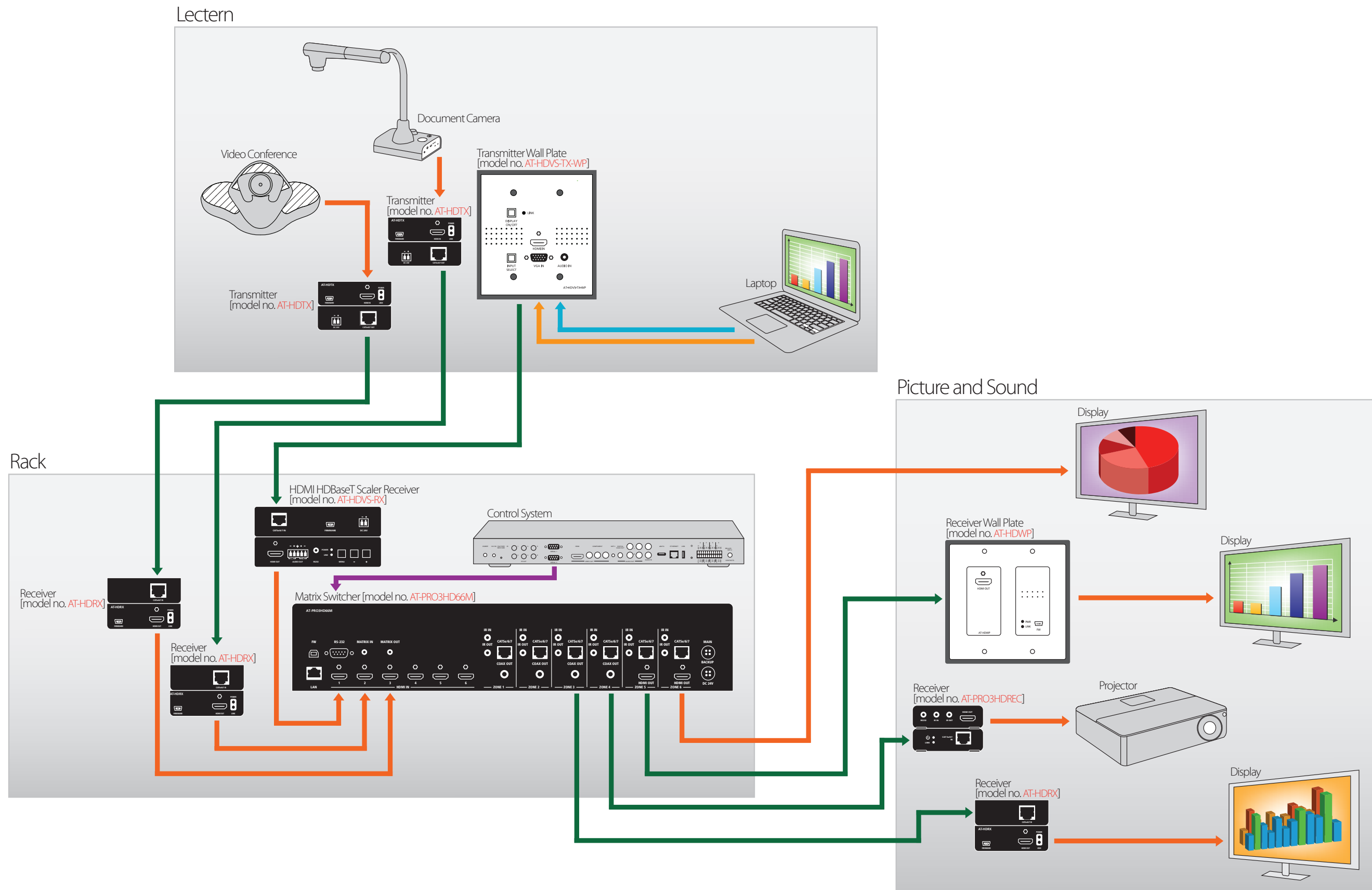
web

Visit atlon.com for more complete product information, including our latest catalog, data sheets and specs.

Atlona Office and Boardroom Solutions

Focus on the meeting, not the technology: corporate boardrooms demand presentation and teleconferencing technology equal to today's media-driven business.

“Someone finally gets it. A wall plate with HDMI and VGA, a reasonably priced matrix switcher, and simple control signal routing.”

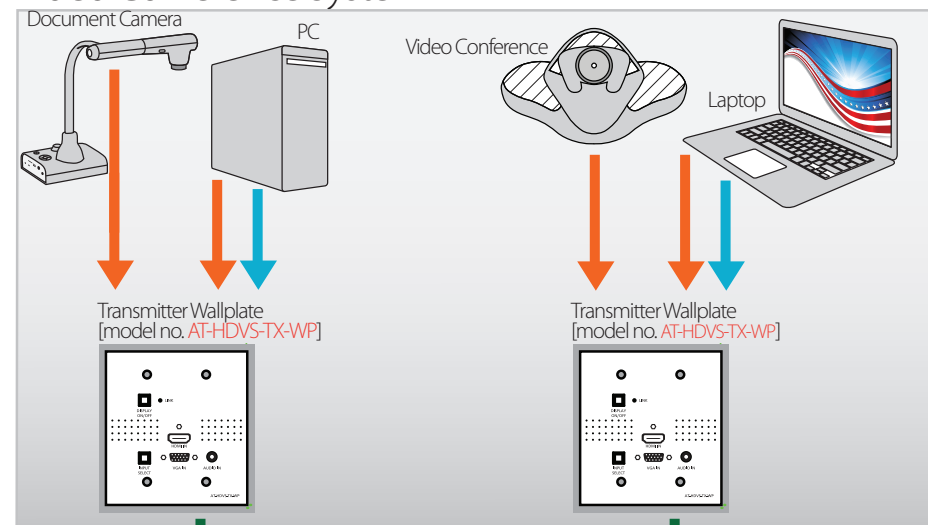


Atlona Government and Military Solutions

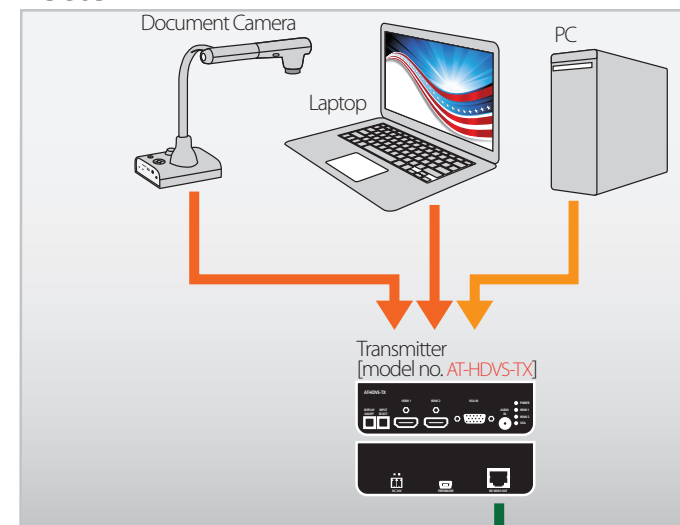
Mission-critical AV: from courtroom cameras to briefing room videoconferencing to command center video walls, we understand procurement challenges. We provide support for GSAs.

“Atlona helped me remain competitive when submitting government bids which led to several project wins”

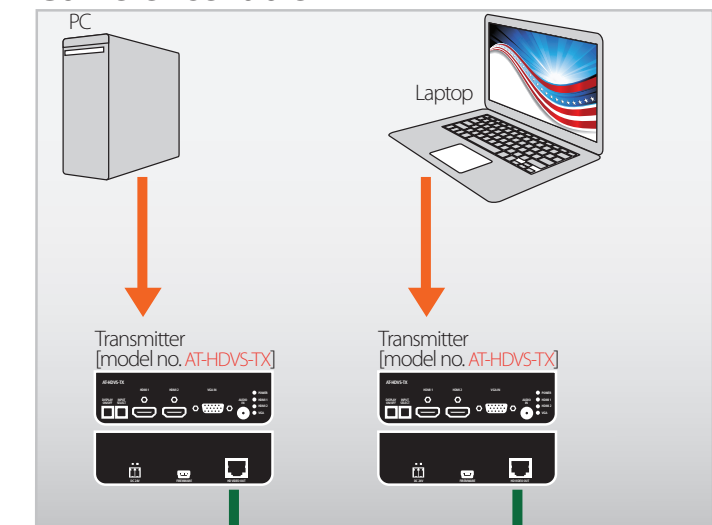
Video Conference System



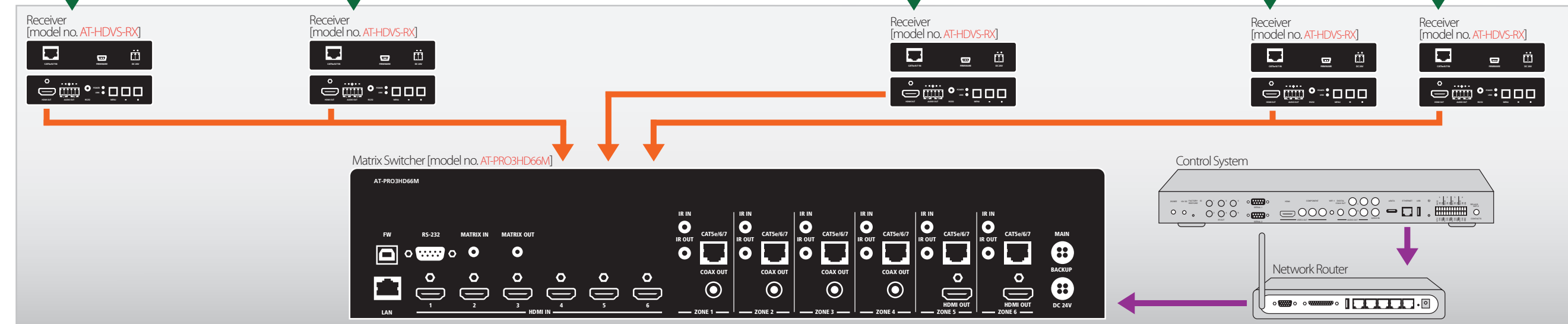
Lectern



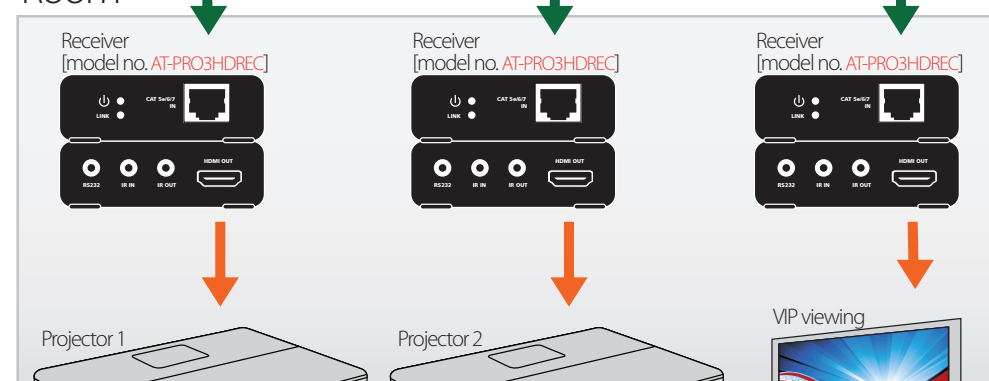
Conference Table



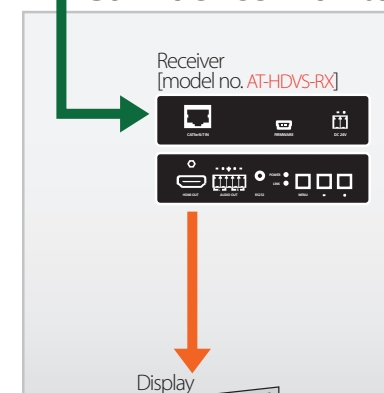
Rack



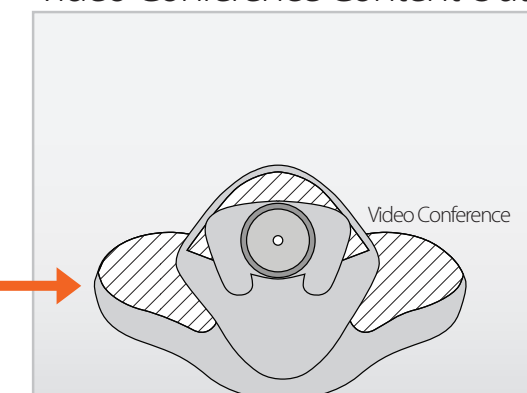
Conference Room



Lectern Confidence Monitor



Video Conference Content Out

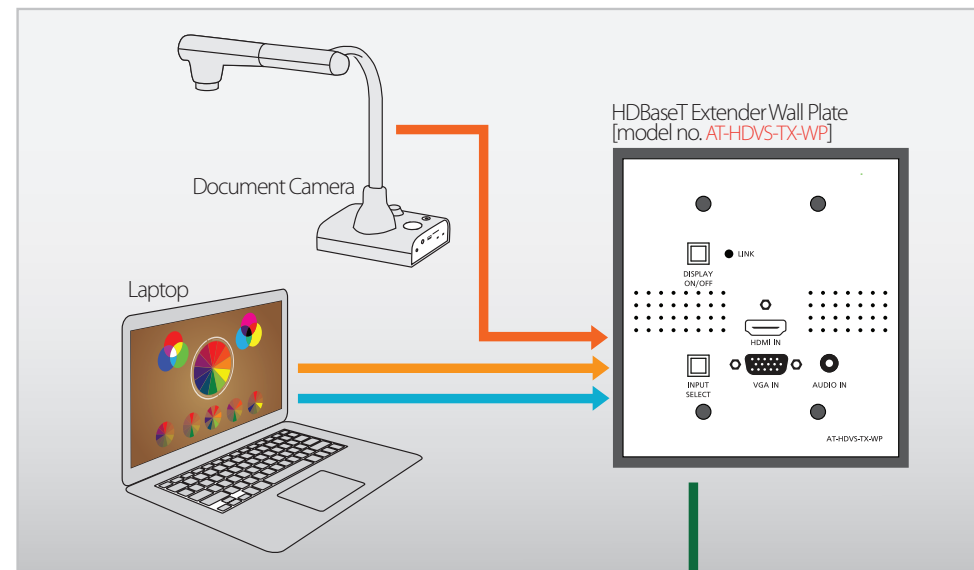


Atlona School and Classroom Solutions

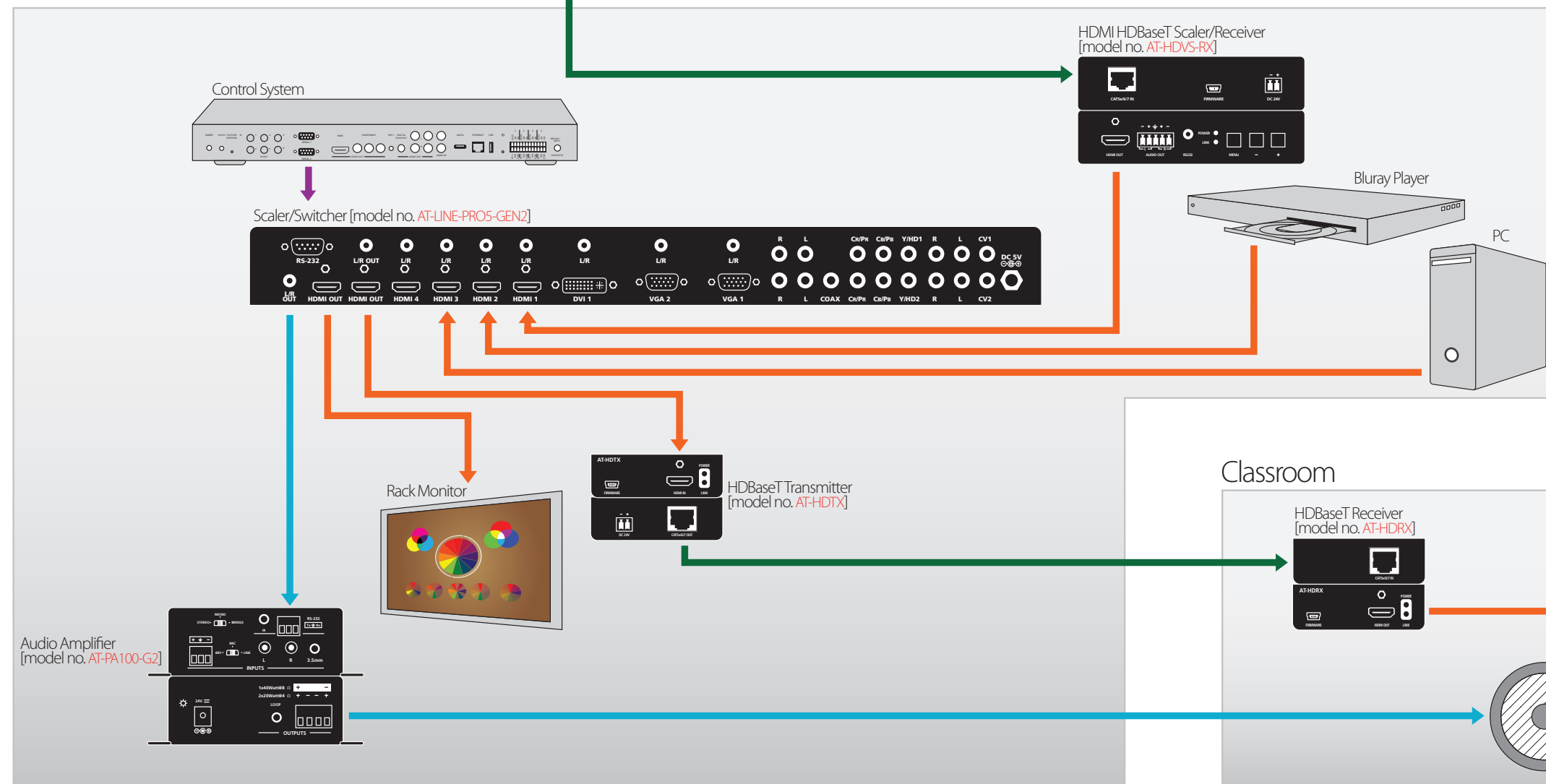
Communicate visually: educational AV calls for a collaborative learning environment with easily-operated multi-source, presentation systems.

“Even on a budget, I was able to get the teachers the AV system they needed to mate older analog equipment and new digital equipment and still keep my costs down.”

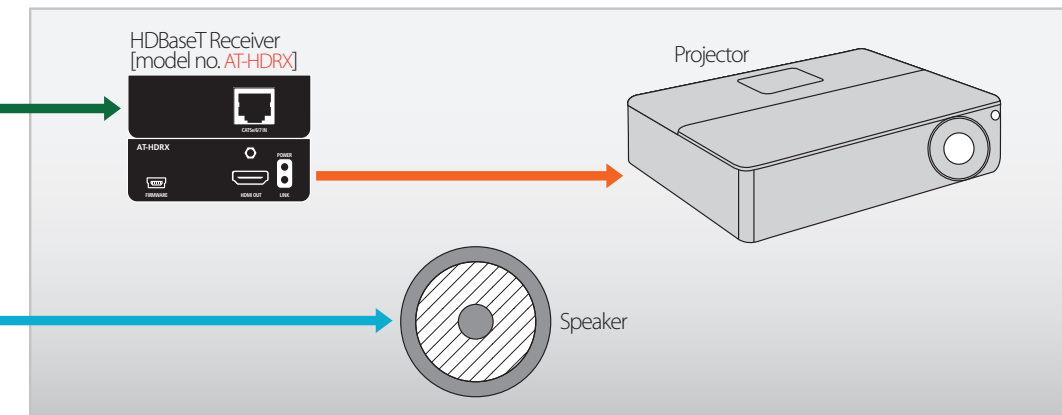
Lectern



Rack



Classroom

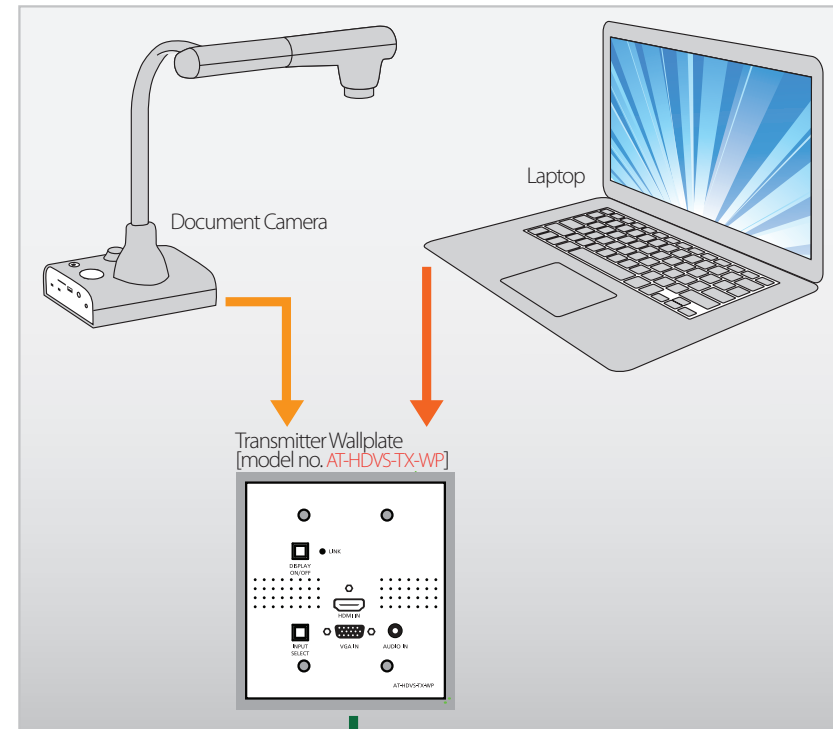


Atlona House of Worship Solutions

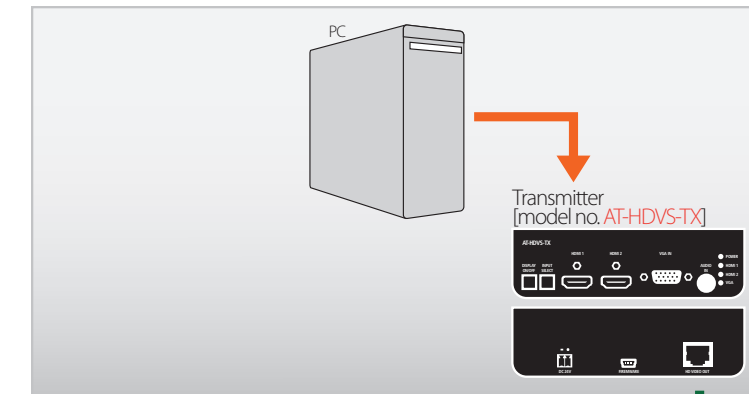
A collective, enhanced worship experience: congregations praise and celebrate on a grand scale.

“House of worship systems need to deliver high-impact images. Large rooms, long distances and tight budgets make that difficult. Atlona helps me bring it all together.”

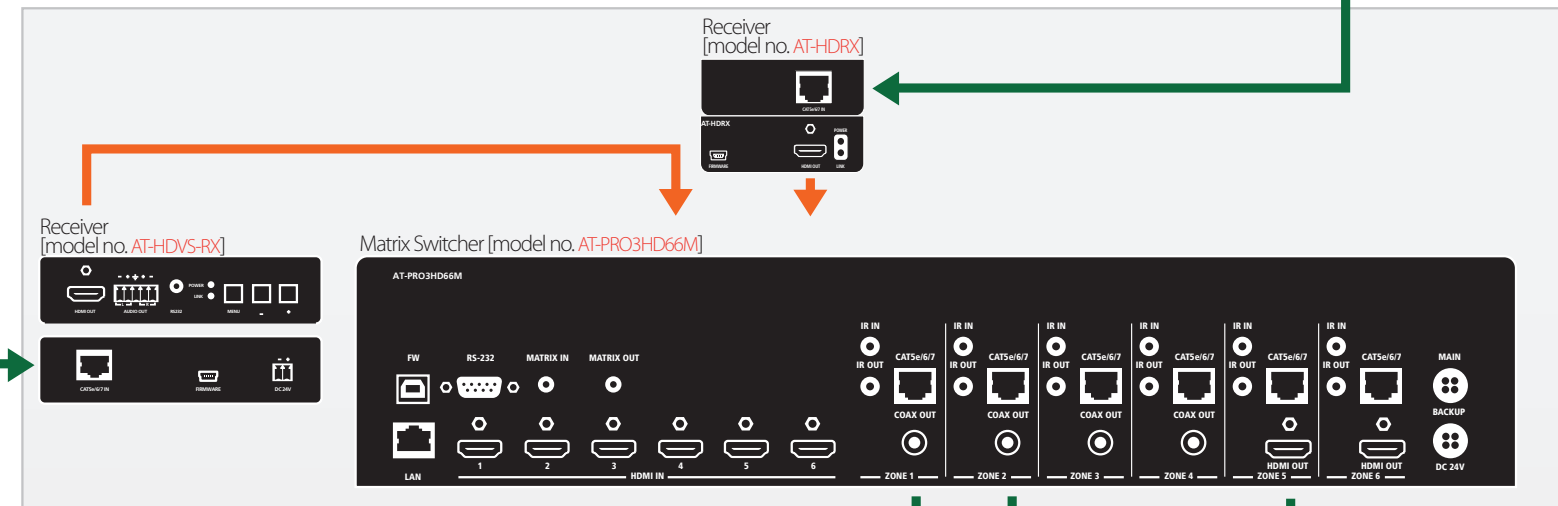
Lectern



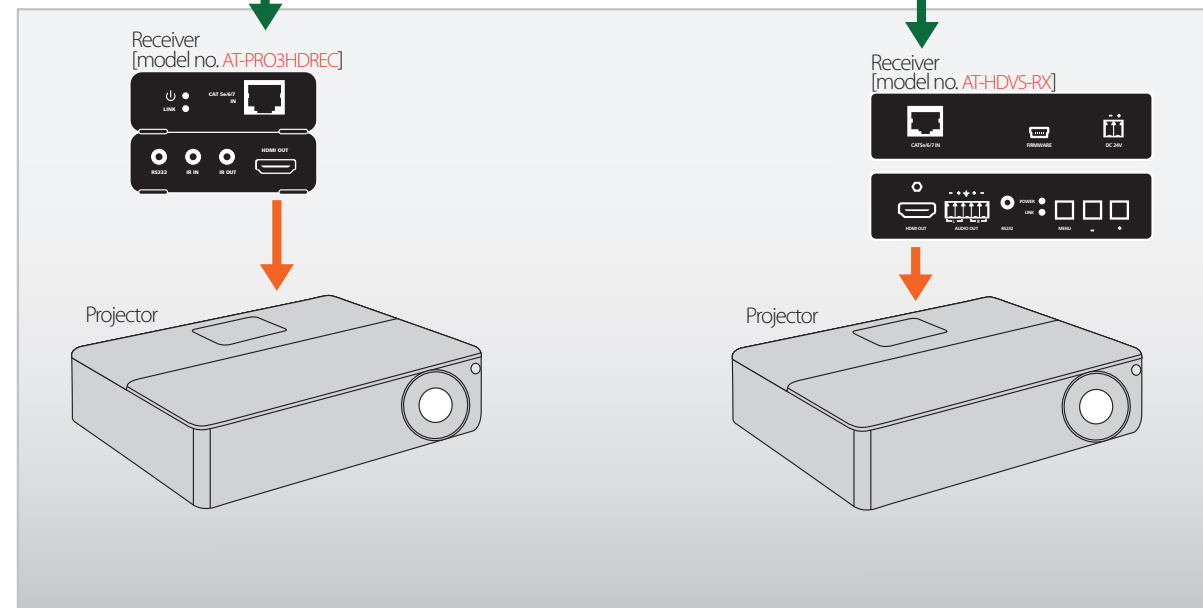
Remote Location



Rack



Main Hall

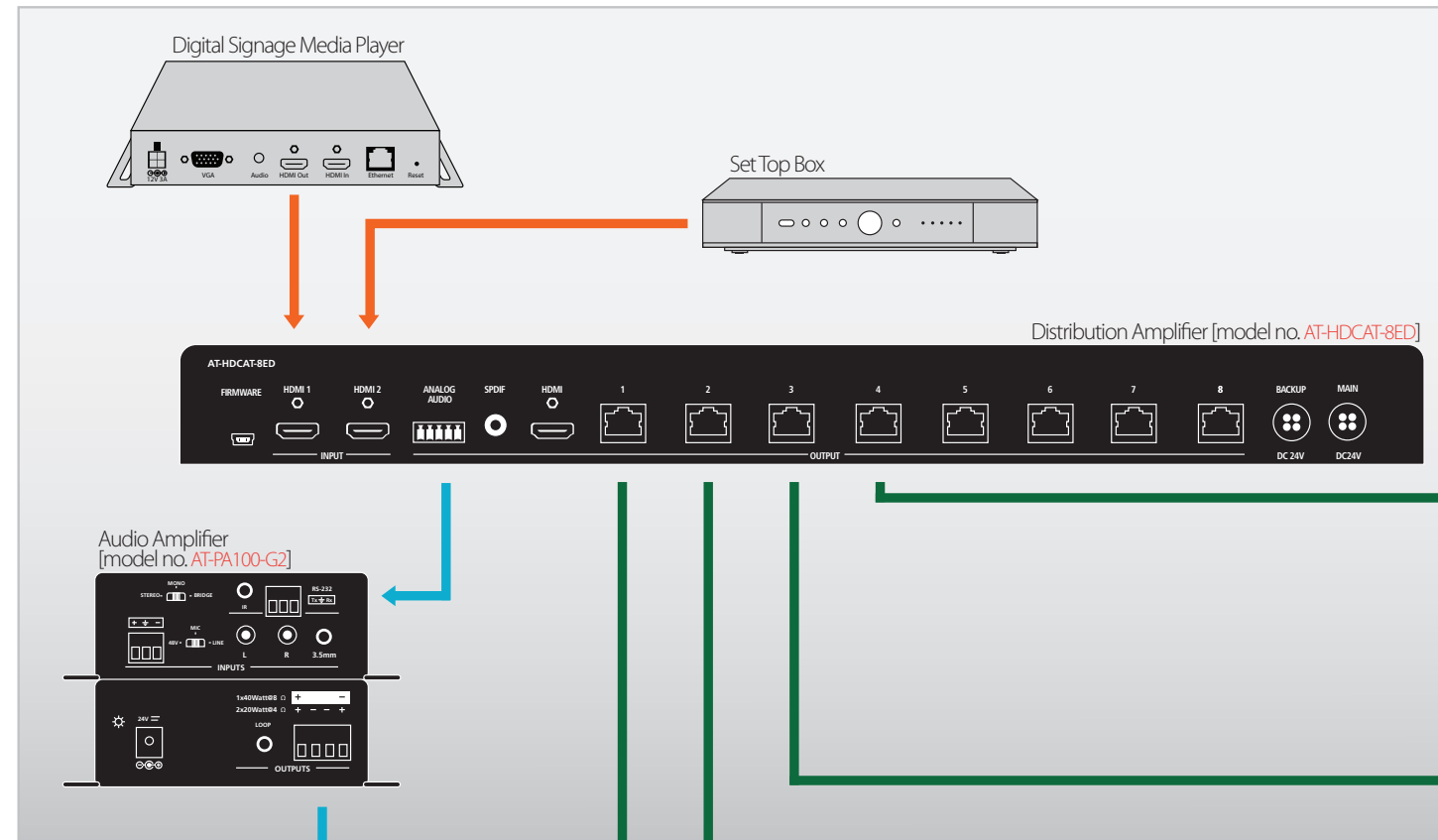


Atlona Digital Signage Solutions

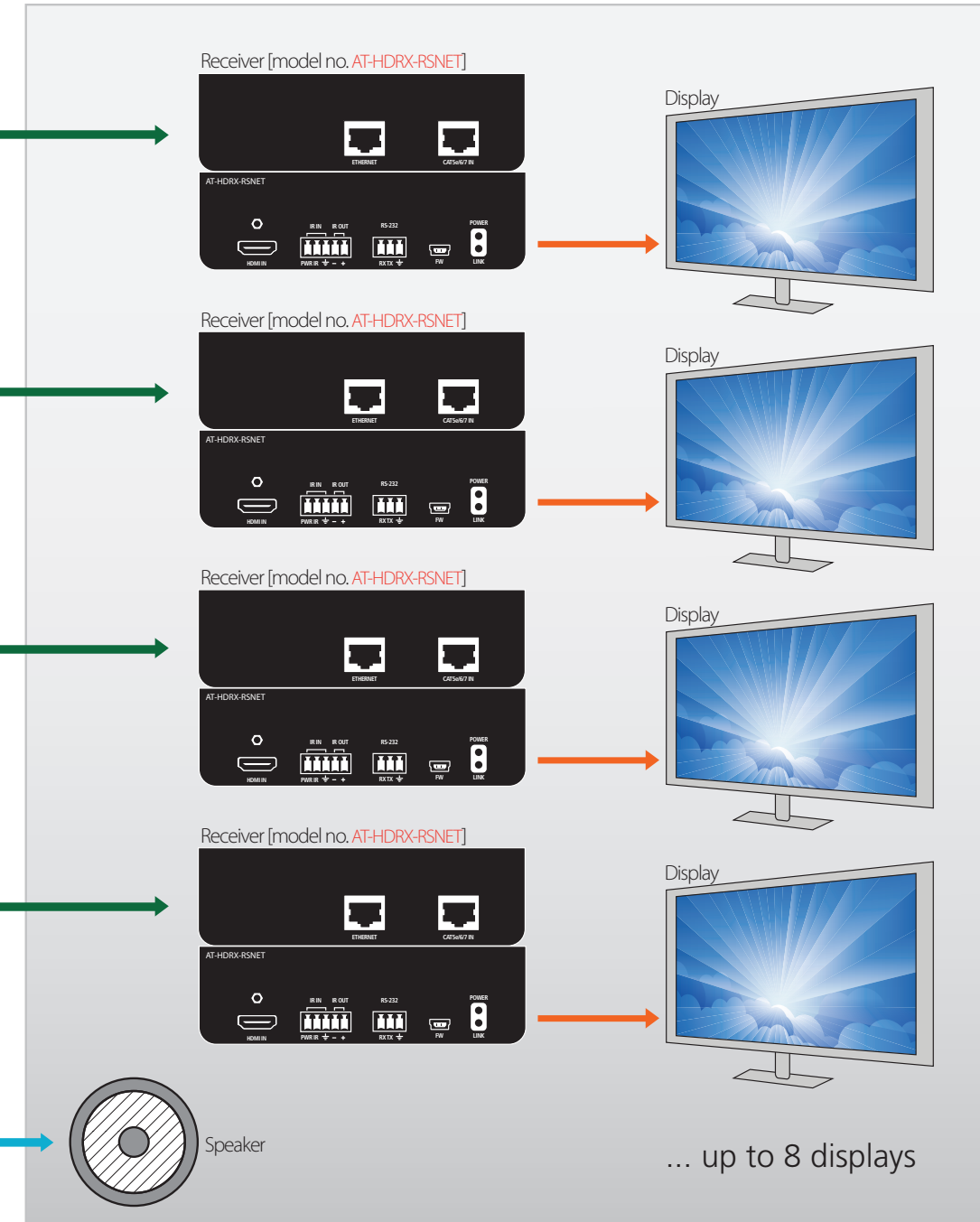
Grab and hold their attention: seamlessly distribute high-resolution audio and video to retail kiosks.

“With Atlona’s HDCAT distribution amps, we were able to easily send sports programs out to 8 different displays in the customer’s sports bar”

Control Room



Picture and Sound

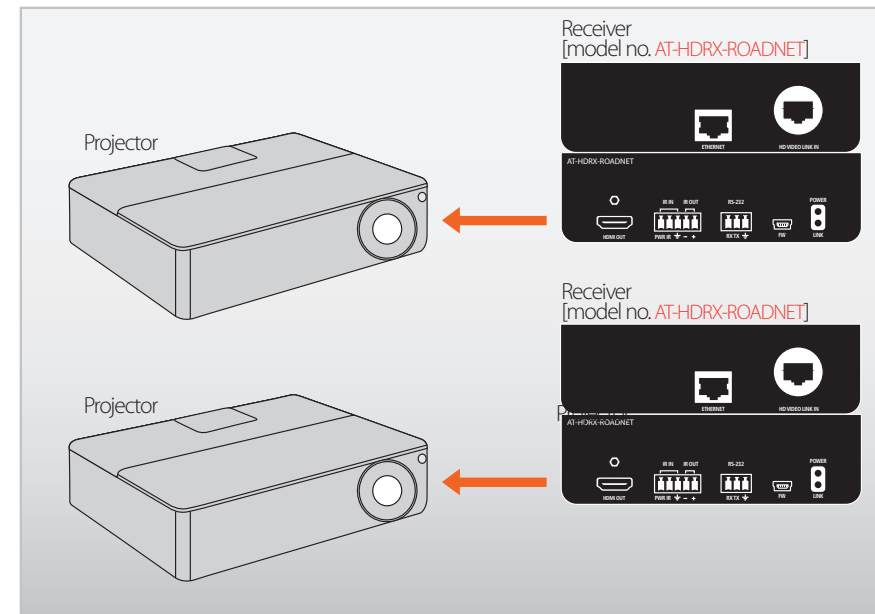


Atlona Rental and Staging Solutions

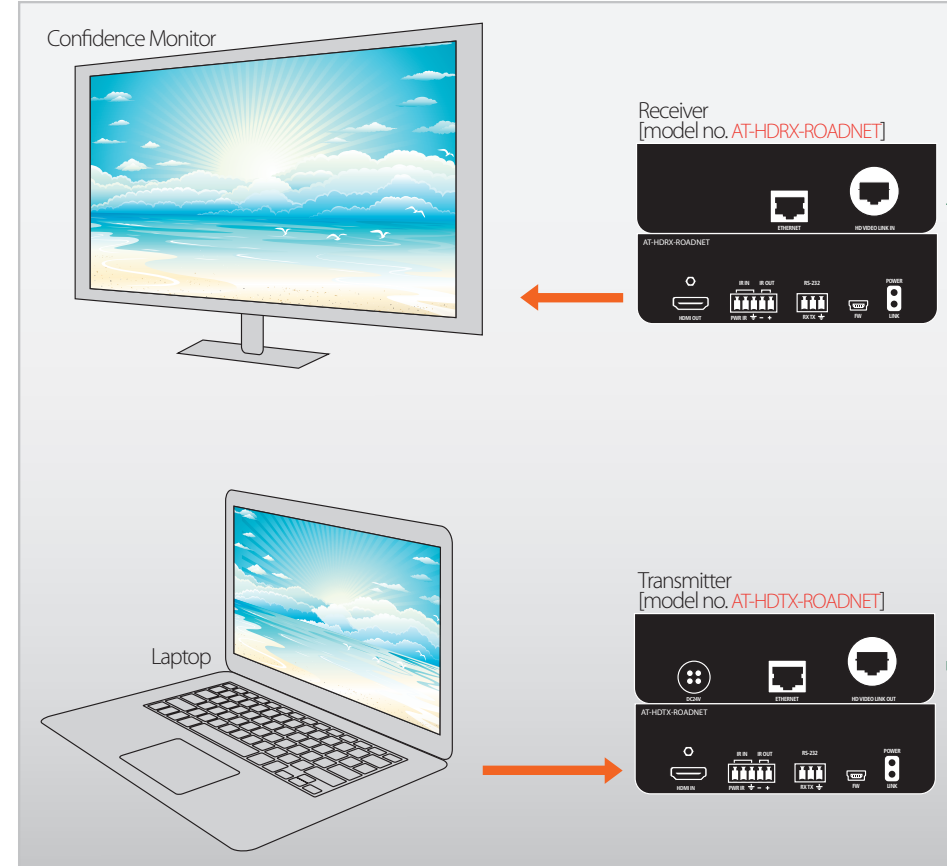
Go live fast: temporary installations need to be tough and rugged, but quick to set up and even faster to take down.

“Rugged and reliable—this is the simplest breakout room setup I’ve used since we went all digital.”

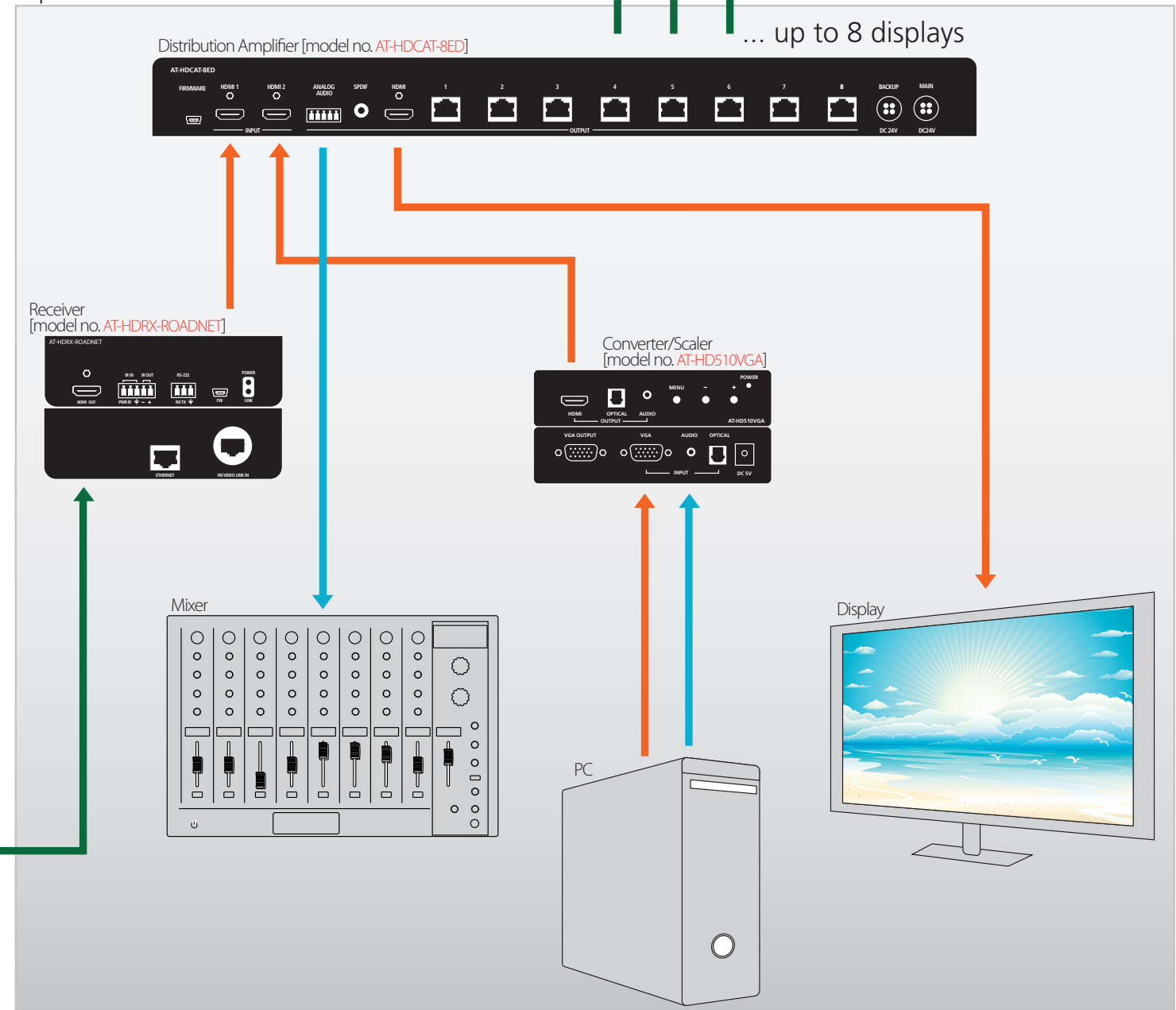
House Video



Lectern



Operator



Switchers

Atlona switching solutions simplify system design and installation, and reduce the complexity of integrating and distributing digital video and audio, media, control, and data.



Atlona PRO MXM Modular Matrix Collection

Customizable modular matrix switchers designed to serve virtually any need, Atlona PRO MXM provides integrated signal processing, a single point of control for multiple digital or analog signal types, and a foundation for future system expansion in a configurable chassis. Deliver better performance, more flexibility, and greater control at lower costs than competing systems.

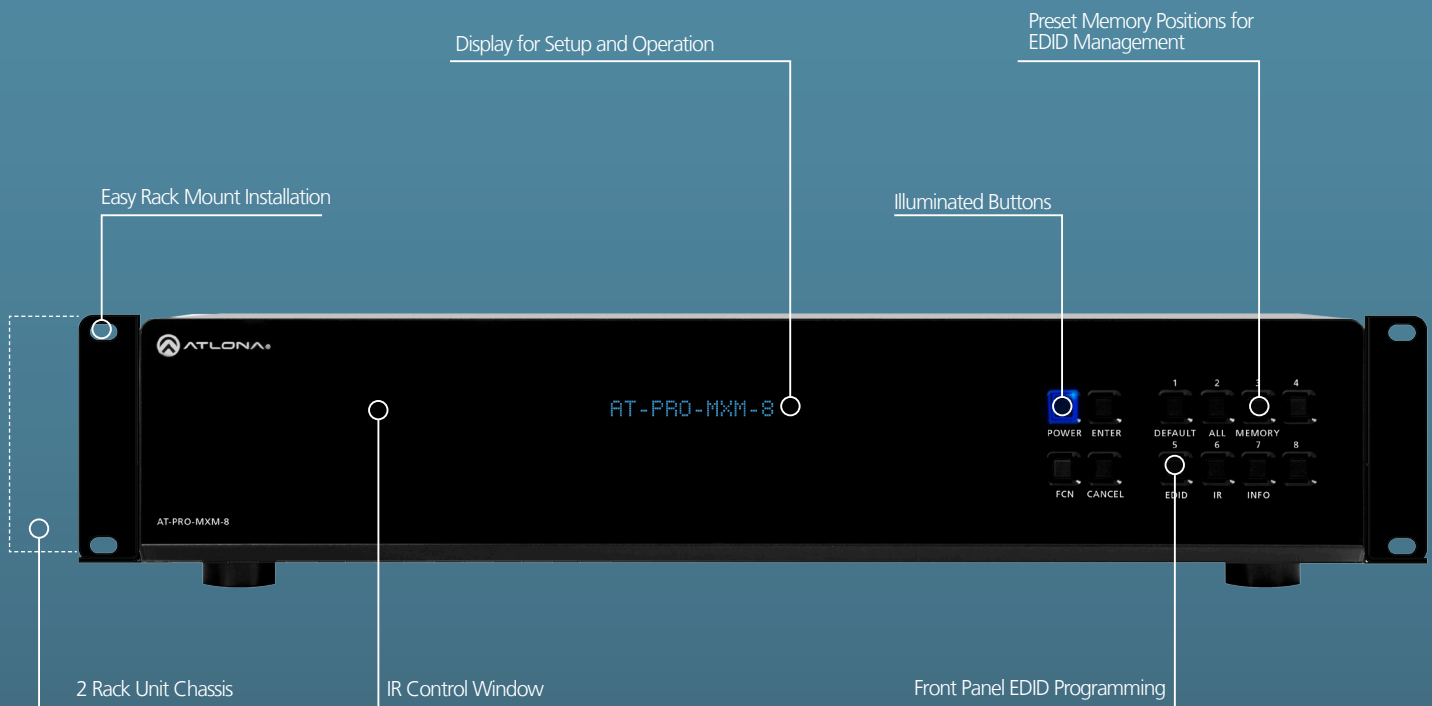
Specification couldn't be easier. Choose a chassis, then let Atlona build and test your switcher: to save time order PRO MXM preconfigured with the most popular combination of inputs and outputs. Alternatively, use our online configurator to customize your matrix switcher by specifying the input and output cards that meet your unique installation requirements.

web

Visit atlona.com for more complete product information, including our latest catalog, data sheets and specs.

Atlona PRO MXM at a Glance

The matrix switcher has moved beyond fixed inputs and outputs to modular, configurable, card-based inputs and outputs that can be customized to fit nearly any application imaginable.

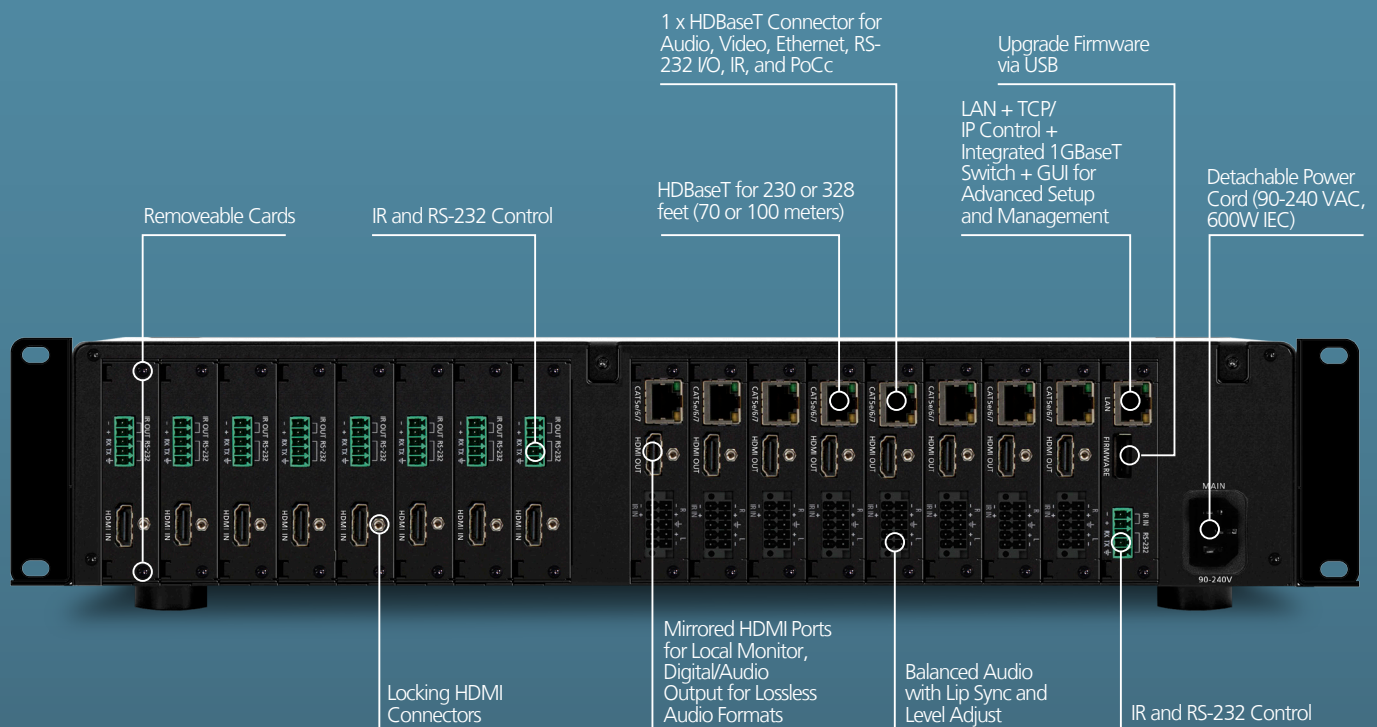


Versatility Re-defined.

From convenient front-panel controls to compact chassis and installer-friendly features, Atlona PRO MXM offers superior flexibility and simplicity. Modular 8x8 and 16x16 chassis can be custom-configured to meet unique requirements of residential or commercial AV systems and provide the versatility to accommodate future updates. Fast, reliable switching with support for Ultra HD (4Kx2k) video, analog audio, lossless digital audio and other AV signals ensure greater compatibility and optimize video and audio performance.

Atlona PRO MXM at a Glance

Atlona's PRO MXM offers comprehensive features for control, audio, video, power and hardware; housed in a sleek 8 x 8 (Q1, 2014) chassis, with a future 16 x 16 (Q2, 2014) chassis in the works.



Performance Re-engineered.

Atlona PRO MXM offers extensive control, input and output options to manage a wide range of digital and analog audio, video and control signals. HDBaseT options deliver uncompressed HD digital video, audio, Ethernet, power and control through a single category cable over distances up to 330 ft (100m). Universal Audio Video Input Card integrates legacy computers and video sources. Featuring a built-in 1GbE Ethernet pass through enabling simultaneous 1000Base-T delivery, enhanced control, and streaming content to pass through the switch to all downstream devices. PRO MXM delivers new performance possibilities all from a single switcher.

web

Visit atlona.com for more complete product information, including our latest catalog, data sheets and specs.



Atlona PRO MXM in the Home Theater

Residential professionals can customize PRO MXM to meet customer needs at better value than competing systems, and easily integrate with current and future technology.

LIP SYNC ADJUSTMENT images and sounds are perfectly synced

BI-DIRECTIONAL IR CONTROL compatible with major control systems

ANALOG AUDIO OUTPUT FOR ZONE AUDIO AMP no DA converters required

REDUCED DEPENDENCY ON EXTERNAL AUDIO CONTROL variable level audio outputs, bass/treble, mute, and adjustable delay for lip sync

COMPACT DESIGN ideal for smaller racks in tight spaces

ULTRA HD (4Kx2K) compatible with any display

3D supports all common 3D formats

AUDIO DSP when integrated with the Atlona HDMI Multi-Channel to 2-Channel Audio Converter [model no. [AT-HD-M2C](#)]

HDMI OUTPUTS ON ALL CARDS for Dolby and DTS lossless audio

EDID MANAGEMENT for multiple display compatibility and fast switching

HDCP COMPLIANT ensures fast reliable routing of any source



Atlona PRO MXM in the Boardroom

Commercial professionals can resolve the challenges of demanding integration with perfect digital video and professional quality analog audio. Robust connectors add reliability. Future card options will support legacy conversion with video scaling.

10.2 GBPS for stunning Ultra HD (4Kx2K) sources and displays

BALANCED ANALOG AUDIO OUTPUTS for commercial audio systems

RS-232 AND ETHERNET CONTROL for use with any control system (GUI and TCP/IP)

UNIVERSAL AUDIO VIDEO (UAV) INPUT CARD for legacy computers and video sources

NETWORK MANAGEMENT interface to get critical status alerts via email

INTEGRATED ETHERNET ON HDBaseT eliminates need for dedicated cable run

INTERNAL AUDIO ADJUSTMENT variable level audio outputs, bass/treble, mute, and adjustable delay for lip sync

web

Visit atlona.com for more complete product information, including our latest catalog, data sheets and specs.

A Versatile Build-Your-Own Solution

The beauty of modular matrix switchers is their ability to serve many needs through configurable inputs and outputs. Atlona's PRO MXM Modular Matrix Switcher takes that beauty a couple of steps farther: the PRO MXM is easy to configure, easy to install, and easy to use.

Modular

CUSTOMIZE to serve many needs; virtually any application imaginable

CONFIGURABLE CHASSIS foundation for future system expansion

SAVE TIME Let Atlona build and test your switcher: order PRO MXM preconfigured with the most popular combination of inputs and outputs or customize your matrix switcher by specifying inputs and outputs online



Control

INTERNAL 1G ETHERNET ROUTER FOR ETHERNET TO HDBaseT EXTENDERS No dedicated Ethernet cable to a display or source is required

COMPREHENSIVE CONTROL WITH FEEDBACK Front panel control, IR control

RS-232 FOR MATRIX AND ZONE CONTROL with feedback

TCP/IP MATRIX CONTROL Control multiple devices via Ethernet connection

TCP/IP ZONE CONTROL streamlines RS-232 control protocols and reduces ports and cables



Power over Category Cable (PoCc)

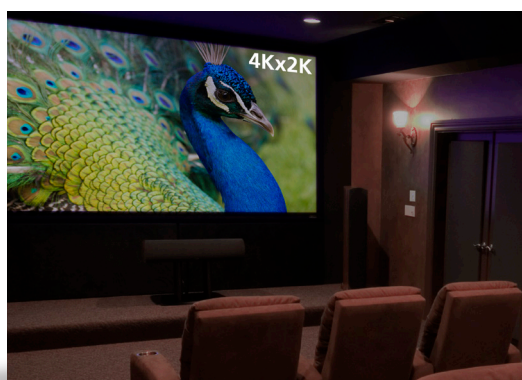
SUPERCHARGED Internal power supply with extra power for all connected HDBaseT zone extenders

POWER, CONTROL, AND HDMI OVER ONE CATEGORY CABLE for simpler installation

Network Management

SOPHISTICATED GUI graphical user interface to easily enable presets, check status, and troubleshoot

EASIER MANAGEMENT Critical status alerts via email



Ultra HD (4Kx2K)

HIGH RESOLUTION up to Ultra HD (4Kx2K) plus deep color and full 3D
10.2 GBPS for stunning Ultra HD (4Kx2K) sources and displays

web

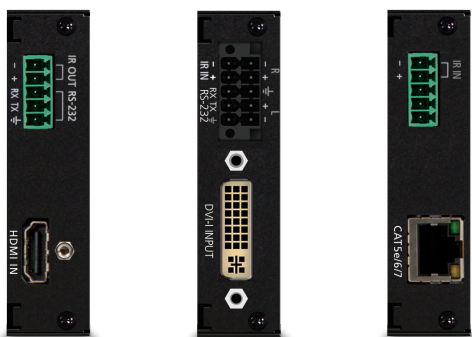
Visit atlon.com for more complete product information, including our latest catalog, data sheets and specs.

Design Your Solution in Three Steps

- 1** **CHOOSE A CHASSIS** PRO MXM is available with support for 8 sources and zones (Q1, 2014) and a future chassis to support 16 sources and zones (Q2, 2014).



[model no. AT-PRO-MXM-8]



- 2** **CHOOSE INPUT CARDS** (A) HDMI for Blu-Ray, set top boxes, and sources near a switcher; (B) universal audio video (UAV) for legacy digital and analog sources; or an (C) HDBaseT input card for sources up to 328 feet (100 meters) away with control via Ethernet, RS-232 and IR. See necessary related transmitters on pages 62-63, 73.

- 3** **CHOOSE OUTPUT CARDS** for distance and control requirements. (A) HDBaseT output card for Ethernet, RS-232 and IR with distances up to 328 feet (100 meters); an (B) HDBaseT output card for RS-232 and IR with distances up to 230 feet (70 meters); or an (C) HDMI output card for short runs. All cards feature balanced analog audio outputs with adjustable levels, bass, treble and lip sync adjustments. See necessary related receivers on pages 62-63.





Atlona PRO MXM HDMI Input Card

AT-PRO-MXM-iHD

Basic input card for HDMI sources. IR from connected display.

- 1 x HDMI
- 1 x IR out
- 1 x RS-232



Atlona PRO MXM HDBaseT Input Card w/Ethernet

AT-PRO-MXM-iHD100

HDBaseT input card for sources up to 328 feet (100 meters) away. Supported with PoCc, Ethernet, IR, and RS-232.

- 1 x HDBaseT connector for audio, video, Ethernet, RS-232 I/O, IR, and PoCc
- 1 x IR in



Atlona PRO MXM Universal Input Card

AT-PRO-MXM-iUAV

Universal input card. Supports DVI, VGA, and component, composite, and S-video with optional breakout cable adapters.

- 1 x DVI-I
- 1 x balanced analog audio input (captive screw)
- 1 x IR in
- 1 x RS-232



Atlona PRO MXM HDMI Output Card

AT-PRO-MXM-oHD

Basic output card for HDMI displays.

- 1 x HDMI
- De-embedded balanced analog audio
- RS-232 zone control
- Analog audio: lip sync, level adjustment, and bass/treble EQ
- Control via GUI, RS-232, and TCP/IP
- 1 x balanced analog audio output



Atlona PRO MXM HDBaseT Output Card 328 feet (100 meters) w/Ethernet

AT-PRO-MXM-oHD100

HDBaseT output card for displays up to 328 feet (100 meters) away, with Ethernet.

- 1 x HDBaseT connector for audio, video, Ethernet, RS-232 I/O, IR, and PoCc
- 1 x mirrored HDMI for AVR or local monitor
- 1 x balanced analog audio output
- 1 x IR in

Analog audio: lip sync, level adjustment, and bass/treble EQ

Control via GUI, RS-232, and TCP/IP



Atlona PRO MXM HDBaseT Output Card 230 feet (70 meters)

AT-PRO-MXM-oHD70

HDBaseT output card for displays up to 230 feet (70 meters) away.

- 1 x HDBaseT connector for audio, video, RS-232 I/O, IR, and PoCc
- 1 x mirrored HDMI for AVR or local monitor
- 1 x balanced analog audio output
- 1 x IR in

Analog audio: lip sync, level adjustment, and bass/treble EQ

Control via GUI, RS-232, and TCP/IP

web

Visit atlona.com for more complete product information, including our latest catalog, data sheets and specs.

Standards-Based Performance and Reliability

Atlona PRO MXM modular matrix collection uses the latest in HDMI and HDBaseT technology to assure standards-based performance and reliability. Atlona understands long-term investment so the PRO MXM is designed for years of service. With the best warranties in the business, your purchase is protected even if you never need it.

| AT-PRO-MXM-8 Chassis Specifications | |
|-------------------------------------|--|
| BANDWIDTH | 10.2 Gbps |
| PORTS | |
| Video input slots | 8 |
| Video output slots | 8 |
| IR input | Captive Screw |
| Firmware update | 1 x USB (Type B) |
| LAN | RJ45 |
| RS-232 | Captive Screw |
| CONTROL ROUTING | IR Distribution, RS-232 Zone Routing |
| ETHERNET | Integrated 1GBaseT Switch |
| POWER | 90-240 VAC, 600W (IEC detachable power cord) |
| AUDIO | HDMI and HDBaseT passes up to Dolby TrueHD and DTS-HD Master Audio |
| RESOLUTION | Video: up to 4Kx2K |
| DIMENSIONS (H X W X D) | 3.45 x 17.25 x 11.40 in. 88 x 438 x 290 mm - Dimensions do not include rack ears and feet |
| RACK SIZE | 2 U, 19 in. standard electronics rack |
| WEIGHT | 12 lb (5.44 kg) |
| TEMPERATURE | Operating: 32°F to 121°F (0°C to 50°C) Storage: -4°F to 140°F (-20°C to 60°C) |
| CERTIFICATIONS | CE, FCC, RoHS (power supply also UL certified) |

| Input Card Specifications | | | |
|---------------------------|-------------------|-------------------|------------------|
| | AT-PRO-MXM-iHD | AT-PRO-MXM-iHD100 | AT-PRO-MXM-iUAV |
| DISTANCE | N/A | 328 ft. (100 m) | N/A |
| VIDEO CONNECTOR | HDMI | RJ45 | DVI-I |
| ANALOG AUDIO | N/A | N/A | Captive Screw |
| RS-232 | Captive Screw | Via HDBaseT | Captive Screw |
| IR CONTROL | Captive Screw Out | Captive Screw In | Captive Screw In |
| ETHERNET | N/A | Via HDBaseT | N/A |

| Output Card Specifications | | | |
|----------------------------|----------------|-------------------|------------------|
| | AT-PRO-MXM-oHD | AT-PRO-MXM-oHD100 | AT-PRO-MXM-oHD70 |
| DISTANCE | N/A | 328 ft. (100 m) | 230 ft. (70 m) |
| VIDEO CONNECTOR | HDMI | RJ45 | RJ45 |
| ANALOG AUDIO | Captive Screw | Captive Screw | Captive Screw |
| RS-232 | Captive Screw | Via HDBaseT | Via HDBaseT |
| IR CONTROL | N/A | Captive Screw In | Captive Screw In |
| ETHERNET | N/A | Via HDBaseT | N/A |

Atlona PRO MXM Product Collection

Product Collection

Chassis Options

Atlona 16 x 16 Modular Matrix Switcher (4RU) [model no. [AT-PRO-MXM-16](#)] (Q2, 2014)

Atlona 8 x 8 Modular Matrix Switcher (2RU) [model no. [AT-PRO-MXM-8](#)] (Q1, 2014)

Input Card Options

Atlona MXM HDMI Input Card [model no. [AT-PRO-MXM-iHD](#)]

Atlona MXM HDBaseT 328 feet (100 meters) Input Card w/Ethernet [model no. [AT-PRO-MXM-iHD100](#)]

Atlona MXM Universal AV Input Card [model no. [AT-PRO-MXM-iUAV](#)]

Output Card Options

Atlona MXM HDMI Output Card [model no. [AT-PRO-MXM-oHD](#)]

Atlona MXM HDBaseT 328 feet (100 meters) Output Card w/Ethernet [model no. [AT-PRO-MXM-oHD100](#)]

Atlona MXM HDBaseT 230 feet (70 meters) Output Card [model no. [AT-PRO-MXM-oHD70](#)]

Related Transmitters, Receivers and Cables

HDBaseT Input Card 328 feet (100 meters) w/Ethernet

[AT-PRO-MXM-iHD100](#)

Atlona HDMI (2) and VGA/Audio HDBaseT Extender Switcher w/Display Control [model no. [AT-HDVS-TX](#)]

Atlona HDMI + VGA/Audio HDBaseT Extender Wall Plate w/Display Control (ships with US + UK wall plates) [model no. [AT-HDVS-TX-WP](#)]

Atlona HDMI HDBaseT Transmitter Extender Wall Plate [model no. [AT-HDIX-WP](#)]

Atlona HDBaseT TX HDMI Transmitter w/Ethernet, RS-232, and IR [model no. [AT-HDIX-RSNET](#)]

Atlona HDBaseT TX HDMI Transmitter w/IR [model no. [AT-HDIX-IR](#)]

Atlona HDBaseT TX HDMI Transmitter [model no. [AT-HDIX](#)]

HDBaseT Output Card 328 feet (100 meters) w/Ethernet

[AT-PRO-MXM-oHD100](#)

Atlona HDBaseT RX HDMI Receiver w/Ethernet, RS-232, and IR [model no. [AT-HDRX-RSNET](#)]

Atlona HDBaseT RX 2-Gang US Decora Wall Plate w/Ethernet, RS-232, and IR [model no. [AT-HDWP-RSNET](#)]

Atlona HDBaseT RX 2-Gang UK Wall Plate w/Ethernet, RS-232, and IR [model no. [AT-HDWP-RSNET-UK](#)]

Atlona HDBaseT RX HDMI Rental/Staging Receiver w/EtherCON, Ethernet, RS-232, and IR [model no. [AT-HDRX-ROADNET](#)]

Atlona HDBaseT RX DVI Receiver w/Ethernet, RS-232, and IR [model no. [AT-DVIRX-RSNET](#)]

Atlona LinkConnect Captive Screw RS232 Cable [model no. [AT-LC-CS-RS232-2M](#)]

HDBaseT Output Card 230 feet (70 meters) w/IR and RS-232

[AT-PRO-MXM-oHD70](#)

Atlona HDBaseT RX HDMI Receiver w/IR [model no. [AT-HDRX-IR](#)]

Atlona HDBaseT RX HDMI Receiver 2-Gang US Wall Plate w/IR [model no. [AT-HDWP-IR](#)]

Atlona HDBaseT RX HDMI Receiver w/IR and RS-232 [model no. [AT-PRO3HDREC](#)]

Atlona HDBaseT RX HDMI Receiver 1-Gang UK Wall Plate w/IR [model no. [AT-HDWP-IR-UK](#)]

Atlona HDMI HDBaseT Scaler Receiver [model no. [AT-HDVS-RX](#)]

Atlona LinkConnect Captive Screw IR Cable [model no. [AT-LC-CS-IR-2M](#)]

Atlona LinkConnect Captive Screw 2-Channel Cable [model no. [AT-LC-CS-2CH-2M](#)]

Atlona PRO MXM modular system is extremely flexible and is compatible with many Atlona product solutions. For assistance configuring your MXM system, contact our Technical Sales and Support Group at **tss@atlona.com** or by dialing **408.962.0515**.

web

Visit atlona.com for more complete product information, including our latest catalog, data sheets and specs.



Atlona PRO2HD Matrix Switcher Collection

Atlona's PRO2HD collection was specially designed to pair our HDBaseT matrix switchers with our HDBaseT receivers for use in larger and more complex installations. Get fast, reliable switching for 16 or 8 sources and displays at distances up to 328 feet (100 meters) over a single category cable. This highly compatible collection supports high-resolution HDMI video (up to 1080p or 1920x1200), plus multi-channel audio. Control options include bi-directional RS-232 and IR control with unique control signal-routing capabilities, and receiver options include audio de-embedding. Matrix switcher features programmable EDID memory presets and advanced HDCP key management. Matrix switchers and receivers in the PRO2HD collection support upgrades in the field and come with redundant power supply.

Atlona **PRO2HD** (HDMI-to-HDBaseT) Matrix Switcher Collection

The Atlona PRO2HD matrix switcher collection uses HDBaseT for fast, reliable switching in larger AV systems. Premier HDBaseT technology supports connections between 16 sources and 16 displays at distances up to 328 feet (100 meters). HDBaseT is the most robust and versatile way to extend HDMI and control signals at longer distances over a single category cable.

Advanced EDID management means faster switching and greater compatibility. Route control signals from a single controller port to each output device independently via programmable RS-232. Powerful IR routing is compatible with third-party control systems.

Atlona Advantages

SUPPORT FOR 16 OR 8 ZONES Input from up to 16 sources to 16 displays

HDBaseT HDMI video (up to 1080p or 1920x1200), multi-channel audio, and control (IR, RS-232) signals over a single category cable up to 328 ft (100 m) away

HDMI INPUTS AND HDBaseT OUTPUTS Maximum flexibility for many installations

PROGRAMMABLE EDID MEMORY PRESETS Maintains compatibility and performance via EDID presets loadable to any source in the matrix

INCLUDED REDUNDANT POWER SUPPLY for added reliability in critical environments

LOCKING HDMI AND POWER CONNECTORS for extra reliability

UPGRADE IN THE FIELD via USB port

RACK MOUNT EARS included

PRO2HD Matrix Switcher Product Options

Atlona 16 x 16 HDMI to HDBaseT Matrix Switcher
[model no. [AT-PRO2HD1616M](#)]

Atlona 8 x 8 HDMI to HDBaseT Matrix Switcher
[model no. [AT-PRO2HD88M](#)]

Related Products

Atlona HDBaseT RX HDMI Receiver w/IR and RS-232
[model no. [AT-PRO2HDREC](#)]

Atlona HDBaseT RX HDMI Receiver w/IR, RS-232 and Audio De-Embedding [model no. [AT-PRO2HDREC-DA](#)]



[model no. AT-PRO2HD1616M]



[model no. AT-PRO2HD88M]



web

Visit atlona.com for more complete product information, including our latest catalog, data sheets and specs.



Atlona PRO2HD Receiver Solutions

Atlona's PRO2HDREC receiver was specifically designed to pair with Atlona's PRO2HD matrix switcher collection, our advanced HDBaseT switchers for 16 or 8 zones. The PRO2HDREC receiver extends video, audio, IR, and RS-232 via category cable from your Atlona PRO2HD matrix switcher to displays up to 328 feet (100 meters) away. Exceptional 1080p or 1920x1200, 3D video, and multi-channel audio. The HDVS-RX receiver scales video, de-embeds audio and offers RS-232 control of scaler functions.



Atlona HDVS Scaler HDBaseT Receiver

AT-HDVS-RX

Atlona's HDVS-RX scales video, de-embeds audio, and enables projector control in a simple system that allows displays of different resolutions to be used in the same system.

Atlona Advantages

MAXIMUM DISTANCE up to 230 ft (70 m)

DE-EMBEDDED AUDIO available as a balanced output at AT-HDVS-RX. The HDMI signal going to the display also supports audio

IMAGE CONTROL OPTIONS Full range of complete image controls

INPUT RESOLUTION up to 1080p, 1920x1200

OUTPUT RESOLUTIONS to match your display up to 1080p or 1920x1200

Related products

Atlona 16 x 16 HDMI to HDBaseT Matrix Switcher [model no. [AT-PRO2HD1616M](#)]

Atlona 8 x 8 HDMI to HDBaseT Matrix Switcher [model no. [AT-PRO2HD88M](#)]



Atlona HDBaseT RX HDMI Receiver w/IR and RS-232

AT-PRO2HDREC

Designed to pair with Atlona's PRO2HD matrix switcher collection to extend video, audio, IR, and RS-232 via category cable to displays up to 328 feet (100 meters) away. Exceptional 1080p or 1920x1200, 3D video, and multi-channel audio.

Atlona Advantages

MAXIMUM DISTANCE up to 328 ft (100 m)

SINGLE WIRE INTERFACE from switcher to RX in third-party IR and RS-232 control systems

INTERFACE ADAPTER RS-232 and IR are supported on 3.5 mm to DB9 adapter

WALL MOUNT EARS included

Related Products

Atlona 16 x 16 HDMI to HDBaseT Matrix Switcher [model no. [AT-PRO2HD1616M](#)]

Atlona 8 x 8 HDMI to HDBaseT Matrix Switcher [model no. [AT-PRO2HD88M](#)]

Atlona USB-to-5V DC Power Adapter [model no. [AT-PWUSB-L](#)]



Atlona PRO3HD Matrix Switcher Collection

Atlona's PRO3HD collection was specially designed to pair our HDBaseT matrix switchers with our HDBaseT receivers for use in more compact installations. Get fast, reliable extending and switching for 6 or 4 sources and 8 or 4 displays at distances up to 230 feet (70 meters). This highly compatible collection supports high-resolution HDMI video (up to 1080p or 1920x1200), plus multi-channel audio and bi-directional RS-232 and IR control. Matrix switchers and receivers in the PRO3HD collection support upgrades in the field.

Atlona **PRO3HD** (HDMI-to-HDBaseT) Matrix Switcher Collection

Atlona's PRO3HD matrix switcher collection uses HDBaseT and power over category cable (PoCc) to more affordably extend display connections up to 230 feet (70 meters). Unique control-signal-routing capability offers easy control of connected devices via TCP/IP, IR, and RS-232 from third-party control systems. A S/PDIF output for each HDBaseT outlet simplifies audio distribution to zone amplifiers or AV receivers. The USB port simplifies firmware updates and upgrades in the field.

Atlona Advantages

SUPPORTS SIX OR FOUR ZONES Choose the switcher size you need for your project

HDBaseT HDMI video (resolutions up to 1080p or 1920x1200), multi-channel audio, and control signals over a single category cable up to 230 ft (70 m)

HDMI INPUTS AND HDBaseT OUTPUTS Maximum flexibility for many installations

PROGRAMMABLE EDID MEMORY PRESETS loadable to any source in the matrix

POWER OVER CATEGORY CABLE (PoCc) No need for power supply at the receiver

S/PDIF DIGITAL AUDIO OUTPUT Sends multi-channel audio (up to Dolby Digital and DTS 5.1) to an AV receiver or zone amplifier for better, more flexible audio performance

LOSSLESS HD DIGITAL AUDIO Dolby TrueHD and DTS-HD Master Audio supported on mirrored HDMI outputs on PRO3HD66M

CONTROL MADE EASY TCP/IP control for easy interface to network-based control systems.

PROGRAMMABLE RS-232 enables routing of control signals from a single controller port to each output device independently

LOCKING HDMI AND POWER CONNECTORS for extra reliability

UPGRADE IN THE FIELD via USB port

RACK EARS included

PRO3HD Matrix Switcher Product Options

Atlona 6 x 6 HDMI to HDBaseT Matrix Switcher
[model no. [AT-PRO3HD66M](#)]

Atlona 4 x 4 HDMI to HDBaseT Matrix Switcher
[model no. [AT-PRO3HD44M](#)]

Related Products

Atlona HDBaseT RX HDMI Receiver w/IR and RS-232
[model no. [AT-PRO3HDREC](#)]

Atlona HDBaseT RX HDMI Receiver w/IR [model no. [AT-HDRX-IR](#)]

Atlona HDBaseT RX HDMI Receiver [model no. [AT-HDRX](#)]

Atlona HDBaseT RX HDMI 2-Gang US Decora Wall Plate w/IR
[model no. [AT-HDWP-IR](#)]



[model no. AT-PRO3HD66M]



[model no. AT-PRO3HDREC]



[model no. AT-PRO3HD44M]

web

Visit atlona.com for more complete product information, including our latest catalog, data sheets and specs.



Atlona H2H (HDMI-to-HDMI) Matrix Switcher Collection

Atlona's H2H collection includes models to support four or eight zones. Ideal for simultaneous, multi-zone viewing and listening in the compact connected home or office. Thoughtful audio features make for amazing home theater and sophisticated presentations.

Atlona **H2H** (HDMI-to-HDMI) Matrix Switcher Collection

The Atlona H2H (HDMI to HDMI) matrix switcher collection simplifies multi-room distribution for superior viewing and listening in multiple spaces simultaneously. Features advanced EDID management for better compatibility, multiple control interfaces, USB port for easier updates in the field, S/PDIF audio outputs, and Audio Return Channel (ARC) pass-through to S/PDIF ports.

Atlona Advantages

SUPPORTS EIGHT OR FOUR ZONES

SUPERIOR EDID MANAGEMENT Better EDID start-up and built-in EDID learning from any connected display for greater compatibility and easier integration

MULTIPLE CONTROL OPTIONS including IR, RS-232, and TCP/IP for greater compatibility and easier integration with a variety of control systems

AUDIO FLEXIBILITY ARC routed to S/PDIF outputs

COMPREHENSIVE AUDIO SUPPORT S/PDIF outputs for each HDMI output allow audio distribution through zone amplifiers or A/V receivers (Dolby TrueHD and DTS-HD Master Audio on HDMI outputs only)

LOCKING HDMI AND POWER CONNECTORS for extra reliability

RACK/WALL MOUNT EARS included

H2H Matrix Switcher Product Options

Atlona 8x8 HDMI to HDMI Matrix Switcher [model no. [AT-H2H-88M](#)]

Atlona 4x4 HDMI to HDMI Matrix Switcher [model no. [AT-H2H-44M](#)]



[model no. AT-H2H-44M]



[model no. AT-H2H-88M]

web

Visit atlona.com for more complete product information, including our latest catalog, data sheets and specs.



Atlona 11-Input Multi-Format Scaler/ Switcher w/Dual Mirrored HDMI Outputs AT-LINE-PRO5-GEN2

Ideal for installations in transition from analog to digital. Smooth, easy presentations on multiple screens. Manage source devices without changing display inputs. 11 inputs are converted and scaled, then routed to mirrored outputs. Audio levels are adjustable.

Atlona Advantages

11-INPUT VERSATILITY Offers 11 Inputs including 4 HDMI, 1 DVI, 2 VGA, 2 component, and 2 composite

HIGH DEFINITION SCALING Scales all inputs to the display's native resolution, up to 1920x1200 or 1080p

CONTROL MADE EASY Provides flexible control via front panel, IR and RS-232 remote controls

AUDIO LEVEL ADJUSTMENT via IR, front panel and RS-232

AUDIO EMBEDDING Embeds audio from DVI, VGA or other video-only input signals for output to HDMI displays as well as the analog audio output

AUDIO DE-EMBEDDING De-embeds audio from HDMI sources for routing to an external analog audio amplifier on a 3.5 mm stereo jack

RACK MOUNT EARS included



Atlona 10-Input Multi-Format Scaler/ Switcher w/HDMI Output AT-LINE-PRO4-GEN2

Ideal for more compact classroom and boardroom installations in transition from analog to digital. Manage source devices without changing display inputs. 10 inputs are converted and scaled, then routed to a monitor for simpler use. Audio levels are adjustable.

Atlona Advantages

10-INPUT VERSATILITY Offers 10 inputs including 4 HDMI, 3 VGA, 1 component, 1 S-video, and 1 composite

HIGH DEFINITION SCALING Scales all inputs to the display's native resolution, up to 1920x1200 or 1080p

CONTROL MADE EASY Provides flexible control via front panel, IR and RS-232 remote controls

AUDIO LEVEL ADJUSTMENT via IR, front panel and RS-232

AUDIO EMBEDDING Embeds audio from DVI, VGA or other video-only input signals for output to HDMI displays as well as the analog audio output

AUDIO DE-EMBEDDING De-embeds audio from HDMI sources for routing to an external analog audio amplifier on a 3.5 mm stereo jack

RACK MOUNT EARS included



Atlona 5-Input Multi-Format Scaler/ Switcher w/HDMI Output AT-LINE-PRO2

An affordable multi-input presentation scaler/switcher for simpler installations. The value switcher for school and office use in transition from analog to digital. Smooth, easy presentations on a single screen. Digital audio output only plus 1 HDMI output.

Atlona Advantages

5-INPUT VERSATILITY Including 1 HDMI, 1 VGA, 1 component, 1 S-video, and 1 composite

HIGH DEFINITION SCALING Scales all inputs to the display's native resolution, up to 1920x1200 or 1080p

CONTROL MADE EASY via faceplate, IR and RS-232 remote controls

AUDIO EMBEDDING Embeds audio from VGA or other analog inputs for output to HDMI displays

MULTI-REGIONAL SUPPORT Supports a larger variety of sources with PAL to NTSC and 480i/576i to 480p/576p conversion capabilities



Atlona 10 x 1 Multi-Format Converter/Switcher w/HDMI Output AT-HD600

Great value for smaller schools and offices in transition from analog to digital, with alternative video inputs. Smooth, easy presentations on one screen. Digital audio via HDMI output only.

Atlona Advantages

10-INPUT VERSATILITY Including 3 HDMI, 1 VGA, 2 component, 2 S-Video and 2 composite inputs

HIGH DEFINITION DIGITIZER Digitizes all inputs to HDMI, up to 1920x1200 or 1080p

CONTROL MADE EASY via faceplate, IR and RS-232 remote controls

AUDIO EMBEDDING Embeds audio from VGA or other analog inputs for output to HDMI displays



Atlona 4 x 2 HDMI Switcher w/Dual Mirrored HDMI Outputs

AT-HD4-V42

The switcher designed for systems on a budget. Easy to integrate.

Atlona Advantages

DUAL MONITORS View on two mirrored monitors

FLEXIBLE 3D AND 1080P VIDEO PERFORMANCE Better video experience with 3D compatibility and 1080p video

ARC Routes audio from compatible HDMI cable to AV receivers via S/PDIF cables

AUDIO DE-EMBED De-embeds audio from HDMI signals to S/PDIF for integration with external audio amplifiers

HDMI ETHERNET CHANNEL Passes Ethernet by HDMI cable to HEC-capable devices

IR AND RS-232 CONTROL for easy system integration

AUTO-SWITCH automatically selects last source connected



Atlona 4 x 1 HDMI Switcher

AT-HD4-V41

A switcher designed for systems on a budget, with a single HDMI video output. Easy to integrate.

Atlona Advantages

EXCELLENT HD VIDEO Capable of resolutions up to 1080p to ensure compatibility with most sources

ARC Routes audio from compatible HDMI cable to AV receivers via S/PDIF cables

AUDIO DE-EMBED De-embeds audio from HDMI signals to S/PDIF for integration with external audio amplifiers

HDMI ETHERNET CHANNEL Passes Ethernet by HDMI cable to HEC-capable devices

IR AND RS-232 CONTROL for easy system integration

AUTO-SWITCH automatically selects last source connected



Atlona 4 x1 Signal Sensing Automatic VGA and Stereo Audio Switcher

AT-PC41A

A simple, robust automatic VGA and audio switcher with four inputs and flexible RS-232 control.

Atlona Advantages

4 VGA INPUTS Switches four VGA/component inputs to one VGA/component output

AUDIO Routes audio inputs from 3.5 mm connectors to one 3.5mm audio output

RS-232 PLUS IR to switch sources, with manual control via front panel



Atlona 2 x1 Signal Sensing Automatic VGA and Stereo Audio Switcher

AT-APC21A

The automatic stereo audio switcher for two VGA inputs plus stereo audio, with smart auto-switch that simplifies operation, plus easy installation via magnetic pad.

Atlona Advantages

2 VGA INPUTS Switches two VGA inputs and audio to one VGA and 3.5 mm audio output

INTELLIGENT AUTO-SWITCHING Switches automatically to the most recent source activated

WIRED REMOTE Includes a manual control pendant to switch sources

EASY INSTALLATION with a built-in magnetic pad

SELF-POWERED Powered through VGA connector (if supported by PC manufacturer); external power supply included if needed

Distribution Amplifiers

Atlona distribution amplifier solutions are designed and engineered for greater system reliability, compatibility, and performance. Distribute a source to multiple displays with the benefit of easier installation and upgrade.



Atlona HDCAT (HDMI to HDBaseT) Distribution Amplifier Collection

Atlona's HDBaseT DA collection (the "HDCATs") uses HDBaseT to reach long distances and power over category cable (PoCc) to simplify installation. Every HDCAT DA can function as a switcher, because dual inputs allow automatic or manual switching for greater reliability: if one source fails the system switches to the remaining, functioning source. Analog/digital audio outputs allow easy interface to commercial audio systems. An HDMI output allows easy connection to a local monitor or allows up to eight HDCATs to be cascaded for massive installations. Models for eight or four displays, plus an extended distance model that reaches 328 feet (100 meters).

web

Visit atlona.com for more complete product information, including our latest catalog, data sheets and specs.

Atlona 2 x 8 HDMI to HDBaseT Extended Distance Distribution Amplifier

Atlona's HDCAT-8ED extended distance model uses HDBaseT to distribute to up to eight displays at extended distances as far as 328 feet (100 meters). Dual inputs allow automatic or manual switching for greater reliability: if one source fails the system switches to the remaining, functioning source. Power over Category Cable (PoCc) sends power via category cable, so there's no need for power supply at the receiver. For added reliability use an Atlona optional redundant power supply.

Atlona Advantages

HDBaseT EXTENDED DISTANCE for video (up to 1080p or 1920x1200), 3D, and audio (all lossy/lossless formats) signals at distances up to 328 ft (100 m)

POWER OVER CATEGORY CABLE (POCC) No need for power supply at the receiver

DE-EMBEDDED AUDIO Digital S/PDIF audio and balanced analog audio on captive screw connectors

DUAL INPUT Two auto-switched (or front-panel-selected) HDMI inputs for greater reliability or to support multiple sources

OPTIONAL REDUNDANT POWER SUPPLY for added reliability in critical environments

ADVANCED EDID learning for greater compatibility

Related Products

Atlona HDBaseT RX HDMI Receiver w/Ethernet, RS-232, and IR [model no. [AT-HDRX-RSNET](#)]

Atlona HDBaseT RX HDMI Rental/Staging Receiver w/etherCON, Ethernet, RS-232, and IR [model no. [AT-HDRX-ROADNET](#)]

Atlona HDBaseT RX HDMI Receiver [model no. [AT-HDRX](#)]

Atlona HDBaseT RX DVI Receiver w/Ethernet, RS-232, and IR [model no. [AT-DVIRX-RSNET](#)]

Atlona HDBaseT RX 2-Gang US Decora Wall Plate w/Ethernet, RS-232, and IR (US and UK) [model no. [AT-HDWP-RSNET](#)]

Atlona 1 x 16 HDMI Distribution Amplifier [model no. [AT-HDDA-16](#)]

Atlona LinkConnect Captive Screw 2-Channel Cable [model no. [AT-LC-CS-2CH-2M](#)]

Atlona Optional Redundant Power Supply [model no. [AT-PW24V6.25A](#)]

Atlona HDMI HDBaseT Scaler Receiver [model no. [AT-HDVS-RX](#)]



[model no. AT-HDCAT-8ED]

Atlona 2 x 8 and 2 x 4 HDMI to HDBaseT Distribution Amplifier

Atlona's HDCAT-8 and HDCAT-4 distribution amps use HDBaseT to distribute to eight or four displays at distances as far as 230 feet (70 meters). Dual inputs allow automatic or manual switching for greater reliability: if one source fails the system switches to the remaining, functioning source. Power over Category Cable (PoCc) sends power via category cable, eliminating the need for power supply at the receiver. For added reliability use an Atlona optional redundant power supply.

Atlona Advantages

HDBaseT for video (up to 1080p or 1920x1200), 3D, and audio (all lossy and lossless formats) signals at distances up to 230 ft (70 m)

POWER OVER CATEGORY CABLE (POCC) No need for power supply at the receiver

DE-EMBEDDED AUDIO Digital S/PDIF audio and balanced analog audio on captive screw connectors

DUAL INPUT Two auto-switched (or front-panel-selected) HDMI inputs for greater reliability or to support multiple sources

OPTIONAL REDUNDANT POWER SUPPLY for added reliability in critical environments

ADVANCED EDID learning for greater compatibility

Related Products

Atlona HDBaseT RX HDMI Receiver [model no. [AT-HDRX](#)]

Atlona HDBaseT RX HDMI Wall Plate (US and UK) [model no. [AT-HDWP](#)]

Atlona 1 x 16 HDMI Distribution Amplifier [model no. [AT-HDDA-16](#)]

Atlona LinkConnect Captive Screw 2-Channel Cable [model no. [AT-LC-CS-2CH-2M](#)]

Atlona Optional Redundant Power Supply [model no. [AT-PW24V6.25A](#)]

Atlona HDMI HDBaseT Scaler Receiver [model no. [AT-HDVS-RX](#)]



[model no. AT-HDCAT-8]



[model no. AT-HDCAT-4]

web

Visit atlona.com for more complete product information, including our latest catalog, data sheets and specs.



Atlona HDDA HDMI Distribution Amplifier Collection

Ultra HD (4Kx2K) is the highest currently available resolution and Atlona's HDDA collection is the first distribution amplifier available on the market that supports it (supports lower resolutions too). Ideal for TV showrooms and digital signage with displays demonstrating cutting edge Ultra HD resolution. Analog and digital audio de-embedding allows input to sound systems in a sports bar or other hospitality or entertainment venue.

Atlona 1 x 8 HDMI Distribution Amplifiers

This distribution amplifier supports Ultra HD (4Kx2K). Advanced-EDID support on 8 zones plus audio de-embedding via 1 x S/PDIF and 1 x balanced audio captive screw. For added reliability use an Atlona optional redundant power supply.

Atlona Advantages

PASSES ULTRA HD (4Kx2K)

LINK STATUS LED for source and outputs

ADVANCED EDID MANAGEMENT Learns reference EDID from first output device connected

SUPPORTS 3D up to 48-bit Deep Color

PASSES DOLBY TRUE HD, DTS HD MASTER AUDIO

OPTIONAL REDUNDANT POWER SUPPLY for added reliability in critical environments

AUDIO DE-EMBEDDING via 1 x S/PDIF and 1 x balanced audio captive screw

LOCKING HDMI and power connectors

CASCADE UP TO 4 DISTRIBUTION AMPLIFIERS (@ 1080P) for large systems

UPDATE IN THE FIELD via USB port

DUAL PURPOSE WALL MOUNT/RACK brackets

Related Products

Atlona LinkConnect Captive Screw 2-Channel Cable [model no. [AT-LC-CS-2CH-2M](#)]

Atlona Optional Redundant Power Supply [model no. [AT-PW24V6.25A](#)]



[model no. AT-HDDA-8]

web

Visit atlona.com for more complete product information, including our latest catalog, data sheets and specs.

Atlona 1 x 4 and 1 x 2 HDMI Distribution Amplifiers

These distribution amplifiers support Ultra HD (4Kx2K). Advanced-EDID support for 4 or 2 zones plus the convenience of a USB port for field updates.

Atlona Advantages

PASSES ULTRA HD (4Kx2K)

LINK STATUS LED for source and outputs

ADVANCED EDID MANAGEMENT Learns reference EDID from first output device connected

SUPPORTS 3D up to 48-bit Deep Color

PASSES DOLBY TRUE HD, DTS HD MASTER AUDIO

LOCKING HDMI and power connectors CASCADE UP TO 8 DISTRIBUTION AMPS for large systems

UPDATE IN THE FIELD via USB port

DUAL PURPOSE WALL MOUNT/RACK brackets

HDCAT-4 includes dual purpose wall mount/rack brackets

HDCAT-2 integrates via Velcro strips and captive screw power termination



[model no. AT-HDDA-4]



[model no. AT-HDDA-2]



Atlona 1 x 4 VGA Distribution Amplifier w/Audio

AT-VGA14A

The distribution amplifier with audio featuring high resolution support for four VGA outputs. Self-powered—at lower resolutions and with most computers no external power is necessary.

Atlona Advantages

HIGH RESOLUTION VIDEO SUPPORT Distributes VGA up to 2048x1536 @ 60/70/85Hz

STEREO AUDIO SUPPORT with 3.5 mm stereo audio jacks

SELF-POWERED can be powered via VGA input from a compatible PC (5V DC power supply is included)



Atlona 1 x 2 VGA Distribution Amplifier w/Audio

AT-VGA12A

The affordable amplifier with audio featuring high resolution support for two VGA outputs. Self-powered—at lower resolutions and with most computers no external power is necessary.

Atlona Advantages

HIGH RESOLUTION VIDEO SUPPORT Distributes VGA up to 2048x1536 @ 60/70/85Hz

STEREO AUDIO SUPPORT with 3.5 mm stereo audio jacks

SELF-POWERED can be powered via VGA input from a compatible PC (5V DC power supply is included)

AUX USB POWER PORT offers additional option to power unit via compatible USB connection

Extenders

Atlona extender solutions help overcome the limitations of analog and digital formats. They affordably and reliably deliver single and multiple signal formats, media, control, and data beyond the limits of traditional cabling.



Atlona HDBaseT Extender Collection

Our collection of HDBaseT extenders offers higher resolutions at longer distances, power over category cable (PoCc), and options for control, distance, form factor, and connectors, so you can customize an installation with just the right features while reducing costs. Choose RSNET for the longest distances and complete control; ROADNET for rental and staging applications; or DVI RSNET for electronics with DVI connectors. Choose WP (wall plates in US and UK form factor) extenders for use behind displays. Choose IR for applications that require only IR control or HD for applications that rely on local control. Compatible with Atlona PRO3HD matrix switchers and HDCAT distribution amplifiers.

web

Visit atlona.com for more complete product information, including our latest catalog, data sheets and specs.

Atlona HDBaseT RSNET Extender Collection

w/ Ethernet, IR, and RS-232

Our RSNET collection has been specially engineered for high-resolution, reliable signal transmission to 328 feet (100 meters). Complete Ethernet, IR, and RS-232 control, rigorously tested for interoperability and compatibility with most third party control systems.

Atlona Advantages

MAXIMUM DISTANCE up to 328 ft (100 m)

POWER OVER CATEGORY CABLE (PoCC) No power is needed at receiver

COMPLETE EASY CONTROL Ethernet, RS-232, and bi-directional IR control

SUPPORTS ULTRA HD (4Kx2K)

MOUNTING EARS included

UPDATE IN THE FIELD via USB port

HIGH EMI REJECTION for compatibility in even the most challenging installations

EXTENDS ALL EMBEDDED AUDIO signals including Dolby TrueHD and DTS-HD Master Audio

CAPTIVE SCREW CONNECTORS for power, IR, and RS-232 add reliability and improve wire management

COMPATIBILITY Designed for use with AT-HDCAT-8ED distribution amplifiers

CEC PASS-THROUGH so it's easier to control the entire system

DIRECT WIRE INTERFACE from TX or RX to third-party IR and RS-232 control systems

RSNET Product Options

RSNET transmitters for traditional extender applications

Atlona HDBaseT TX HDMI Transmitter w/Ethernet, RS-232, and IR

[model no. **AT-HDTX-RSNET**]

Atlona HDBaseT RX HDMI Transmitter w/Ethernet, RS-232, and IR

[model no. **AT-HDRX-RSNET**]

RSNET wall plates for in-wall installation behind a display

Atlona HDBaseT RX HDMI 2-Gang US Decora Wall Plate w/ Ethernet, RS-232, and IR [model no. **AT-HDWP-RSNET**]

Atlona HDBaseT RX HDMI 2-Gang UK Wall Plate w/Ethernet, RS-232, and IR [model no. **AT-HDWP-RSNET-UK**]

RSNET DVI extenders for applications that use DVI for video

Atlona HDBaseT TX DVI Transmitter w/Ethernet, RS-232, and IR [model no. **AT-DVITX-RSNET**]

Atlona HDBaseT RX DVI Transmitter w/Ethernet, RS-232, and IR [model no. **AT-DVIRX-RSNET**]

Related Products

Atlona 2 x 8 HDMI to HDBaseT Extended Distance Distribution Amplifier [model no. **AT-HDCAT-8ED**]

Atlona LinkConnect Captive Screw RS232 Cable [model no. **AT-LC-CS-RS232-2M**]



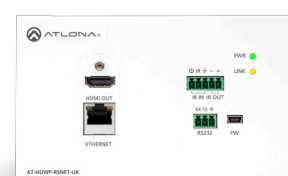
[model no. AT-HDTX-RSNET Transmitter]



[model no. HDRX-RSNET Receiver]



[model no. AT-HDWP-RSNET Receiver] [model no. AT-HDWP-RSNET-UK Receiver]



[model no. AT-DVITX-RSNET Transmitter]



[model no. DVIRX-RSNET Receiver]

Atlona HDBaseT ROADNET Extender Collection

w/Ethernet, IR, and RS-232

Our ROADNET extenders are designed specifically for rental and staging events, road shows, and semi- or non-permanent installations that demand consistently reliable performance and easier installation and breakdown.

Neutrik etherCON RJ45 connectors and quick-connect power supply. Ethernet, RS-232, and IR control at distances up to 328 feet.

Atlona Advantages

SIGNAL AND CONNECTOR FEATURES including HDMI for video/audio and HDBaseT on Neutrik RJ45 etherCON connectors

MAXIMUM DISTANCE up to 328 ft (100 m)

POWER OVER CATEGORY CABLE (POCC) No power is needed at receiver

COMPLETE EASY CONTROL Ethernet, RS-232, and bi-directional IR control

SUPPORTS ULTRA HD (4Kx2K)

HIGH EMI REJECTION for compatibility in even the most challenging installations

EXTENDS ALL EMBEDDED AUDIO signals including Dolby TrueHD and DTS-HD Master Audio

UPDATE IN THE FIELD via USB port

ALLOWS DIRECT WIRE CONNECTION from TX or RX to third-party IR and RS-232 control systems

ROADNET Product Options

Atlona HDBaseT TX HDMI Rental/Staging Transmitter w/ etherCON, Ethernet, RS-232, and IR [model no. **AT-HDTX-ROADNET**]

Atlona HDBaseT RX HDMI Rental/Staging Receiver w/ etherCON, Ethernet, RS-232, and IR [model no. **AT-HDRX-ROADNET**]

Related Products

Use with Neutrik etherCON NE8MC connectors

Atlona 2 x 8 HDMI to HDBaseT Extended Distance Distribution Amplifier [model no. **AT-HDCAT-8ED**]

Atlona 2 x 8 HDMI to HDBaseT Distribution Amplifier [model no. **AT-HDCAT-8**]

Atlona 2 x 4 HDMI to HDBaseT Distribution Amplifier [model no. **AT-HDCAT-4**]

Atlona 1 x 16 HDMI to HDMI Distribution Amplifier [model no. **AT-HDDA-16**]

Atlona 1 x 8 HDMI to HDMI Distribution Amplifier [model no. **AT-HDDA-8**]

Atlona 1 x 4 HDMI to HDMI Distribution Amplifier [model no. **AT-HDDA-4**]

Atlona 1 x 2 HDMI to HDMI Distribution [model no. **AT-HDDA-2**]



[model no. AT-HDTX-ROADNET Transmitter]



[model no. AT-HDRX-ROADNET Receiver]

web

Visit atlona.com for more complete product information, including our latest catalog, data sheets and specs.

Atlona HDBaseT RSNET DVI Extender Collection

Atlona's HDBaseT DVI extenders are engineered especially for electronics with DVI connectors to take advantage of the connector retention screws demanded by many applications. Ideal for PC users or electronics used in sensitive medical applications, when a compromised signal could be catastrophic. RSNET DVI

extenders also utilize HDMI-compatible electronics for transmitting embedded audio and Ultra HD (4Kx2K) if supported by both source and display.

Atlona Advantages

MAXIMUM DISTANCE up to 328 ft (100 m)

POWER OVER CATEGORY CABLE (PoC) No power is needed at receiver

COMPLETE EASY CONTROL Ethernet, RS-232, and bi-directional IR control

SUPPORTS ULTRA HD (4Kx2K) single link DVI only

HIGH EMI REJECTION for compatibility in even the most challenging installations

EXTENDS ALL EMBEDDED AUDIO signals including Dolby TrueHD and DTS-HD Master Audio

CAPTIVE SCREW CONNECTORS for power, IR, and RS-232 for add reliability and improve wire management

UPDATE IN THE FIELD via USB port

ALLOWS DIRECT WIRE CONNECTION from TX or RX to third-party IR and RS-232 control systems

COMPATIBILITY Designed for use with Atlona AT-HDTX-RSNET transmitters; recommended with AT-HDCAT-8ED distribution amplifiers and Atlona PRO3HD matrix switchers

RSNET DVI Product Options

Atlona HDBaseT RX DVI Receiver w/Ethernet, RS-232, and IR [model no. **AT-DVIRX-RSNET**]

Atlona HDBaseT TX DVI Transmitter w/Ethernet, RS-232, and IR [model no. **AT-DVITX-RSNET**]

Related Products

Atlona 2 x 8 HDMI to HDBaseT Extended Distance Distribution Amplifier [model no. **AT-HDCAT-8ED**]

Atlona HDBaseT TX HDMI Transmitter w/Ethernet, RS-232, and IR [model no. **AT-HDTX-RSNET**]

Atlona 6 x 6 HDMI to HDBaseT Matrix Switcher [model no. **AT-PRO3HD66M**]

Atlona 4 x 4 HDMI to HDBaseT Matrix Switcher [model no. **AT-PRO3HD44M**]

Atlona LinkConnect Captive Screw RS232 Cable [model no. **AT-LC-CS-RS232-2M**]



[model no. AT-DVIRX-RSNET Receiver]



[model no. AT-DVITX-RSNET Transmitter]

Atlona HDBaseT IR Extender Collection

HDBaseT and power over category cable (PoCc) affordably extend high-resolution, reliable signals up to 230 feet (70 meters), plus compatibility with control systems that use IR control.

Atlona Advantages

MAXIMUM DISTANCE up to 230 ft (70 m)

POWER OVER CATEGORY CABLE (PoCc) No power is needed at receiver

EASY CONTROL Bi-directional IR compatible with third party control systems

SUPPORTS ULTRA HD (4Kx2K)

MOUNTING EARS included

UPDATE IN THE FIELD via USB port

HIGH EMI REJECTION for compatibility in even the most challenging installations

CEC PASS-THROUGH so it's easier to control the entire system

EXTENDS ALL EMBEDDED AUDIO signals including Dolby TrueHD and DTS-HD Master Audio

SIGNAL AND CONNECTOR FEATURES IR on captive screw connectors plus HDMI for video/audio

CAPTIVE SCREW CONNECTOR for power on TX and PoCc on RX

IR Product Options

IR transmitters and receivers for traditional extender applications

Atlona HDBaseT TX HDMI Transmitter w/IR
[model no. **AT-HDTX-IR**]

Atlona HDBaseT RX HDMI Receiver w/IR
[model no. **AT-HDRX-IR**]

IR wall plates for in-wall installation behind displays

Atlona HDBaseT RX HDMI 2-Gang US Decora Wall Plate w/IR
[model no. **AT-HDWP-IR**]

Atlona HDBaseT RX HDMI 1-Gang UK Wall Plate w/IR
[model no. **AT-HDWP-IR-UK**]

Related Products

Atlona 6 x 6 HDMI to HDBaseT Matrix Switcher
[model no. **AT-PRO3HD66M**]

Atlona 4 x 4 HDMI to HDBaseT Matrix Switcher
[model no. **AT-PRO3HD44M**]

Atlona LinkConnect Captive Screw IR Cable
[model no. **AT-LC-CS-IR-2M**]



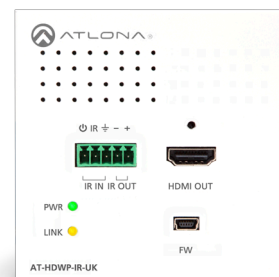
[model no. AT-HDTX-IR Transmitter]



[model no. AT-HDRX-IR Receiver]



[model no. AT-HDWP-IR Receiver]



[model no. AT-HDWP-IR-UK Receiver]

web

Visit atlona.com for more complete product information, including our latest catalog, data sheets and specs.

Atlona HDBaseT HD Extender Collection

HDBaseT and power over category cable (PoCc) affordably extend high-resolution, reliable signals up to 230 feet (70 meters) for spaces that require only local control.

Atlona Advantages

MAXIMUM DISTANCE up to 230 ft (70 m)

POWER OVER CATEGORY CABLE (PoCc) No power is needed at receiver

SUPPORTS ULTRA HD (4Kx2K)

EXTENDS ALL EMBEDDED AUDIO signals including Dolby TrueHD and DTS-HD Master Audio

SIGNAL AND CONNECTOR FEATURES power on captive screw connector on TX and PoCc on RX

Related products

Atlona 2 x 8 HDMI to HDBaseT Distribution Amplifier
[model no. [AT-HDCAT-8](#)]

Atlona 2 x 4 HDMI to HDBaseT Distribution Amplifier
[model no. [AT-HDCAT-4](#)]

Atlona 6 x 6 HDMI to HDBaseT Matrix Switcher
[model no. [AT-PRO3HD66M](#)]

Atlona 4 x 4 HDMI to HDBaseT Matrix Switcher
[model no. [AT-PRO3HD44M](#)]

HD Product Options

HD transmitters for traditional extender applications

Atlona HDBaseT TX HDMI Transmitter [model no. [AT-HDTX](#)]

Atlona HDBaseT RX HDMI Receiver [model no. [AT-HDRX](#)]

HD wall plates for in-wall installation behind your display

Atlona HDBaseT RX HDMI 2-Gang US Decora Wall Plate
[model no. [AT-HDWP](#)]

Atlona HDBaseT RX HDMI 1-Gang UK Wall Plate
[model no. [AT-HDWP-UK](#)]



[model no. AT-HDTX Transmitter]



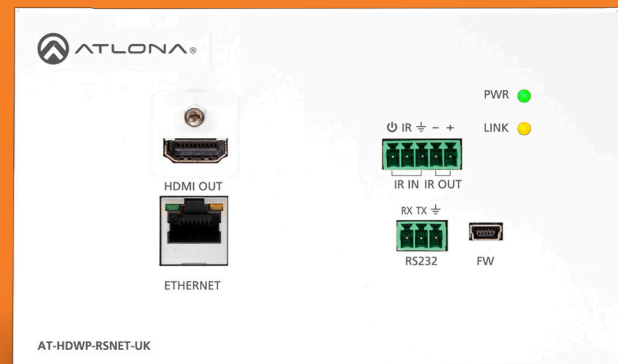
[model no. AT-HDRX Receiver]



[model no. AT-HDWP Receiver]



[model no. AT-HDWP-UK Receiver]



Atlona HDBaseT Wall Plate Extender Collection

Get the same long distances, high resolutions, and added convenience of power over category cable (PoCc) as our HDBaseT extenders in traditional box form factor, but with one crucial design difference: our wall plates go in-wall behind displays for neater, more elegant installations. Options for control and distance in US or UK form factors let you customize an installation with just the right features while reducing costs. Choose RSNET wall plates for the longest distances and complete control; Choose IR for applications that require only IR control or HD for applications that rely on local control. All our wall plate extenders are compatible with Atlona PRO3HD matrix switchers and HDCAT distribution amplifiers.

web

Visit atlona.com for more complete product information, including our latest catalog, data sheets and specs.

Atlona HDBaseT RSNET Wall Plate Extender Collection

w/Ethernet, IR, and RS-232

HDBaseT and power over category cable (PoCc) affordably extend high-resolution, reliable signals up to 328

feet (100 meters) in a stylish wall plate. PoCc eliminates the need for power at the wall plate, saving the cost of installing power. Full Ethernet, RS-232, and bi-directional IR control.

Atlona Advantages

MAXIMUM DISTANCE up to 328 ft (100 m)

POWER OVER CATEGORY CABLE (PoCc) No power is needed at receiver

COMPLETE EASY CONTROL Ethernet, RS-232, and bi-directional IR control

SUPPORTS ULTRA HD (4Kx2K)

LOCKING HDMI PORTS for extra-secure connections and uninterrupted signals

SIDE-EXIT RJ45 ON UK MODELS to minimize category cable bend radius

CONVENIENT CAPTIVE-SCREW TERMINATIONS for control help reduce wire bundles

EXTENDS EMBEDDED AUDIO SIGNALS including Dolby TrueHD and DTS-HD Master Audio

UPGRADE IN THE FIELD via USB port

CEC PASS-THROUGH so it's easier to control the entire system

RSNET Wall Plate Product Options

Atlona HDBaseT RX HDMI 2-Gang US Decora Wall Plate w/ Ethernet, RS-232, and IR [model no. [AT-HDWP-RSNET](#)]

Atlona HDBaseT RX HDMI 2-Gang UK Wall Plate w/Ethernet, RS-232, and IR [model no. [AT-HDWP-RSNET-UK](#)]

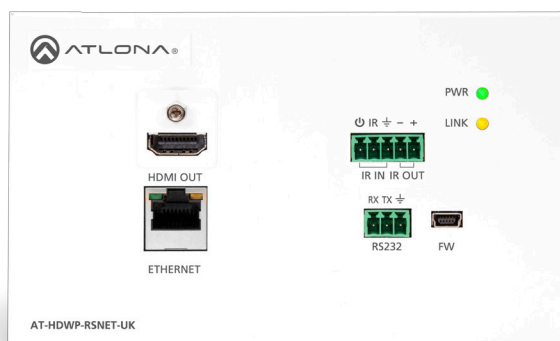
Related Products

Atlona HDBaseT TX HDMI Transmitter w/Ethernet, RS-232, and IR [model no. [AT-HDTX-RSNET](#)]

Atlona 6 x 6 HDMI to HDBaseT Matrix Switcher [model no. [AT-PRO3HD66M](#)]



[model no. AT-HDWP Receiver]



[model no. AT-HDWP-RSNET-UK Receiver]

Atlona HDBaseT IR Wall Plate Extender Collection

HDBaseT and power over category cable (PoCc) affordably extend high-resolution, reliable signals up to

230 feet (70 meters) in a stylish wall plate. PoCc eliminates the need for power at the wall plate, saving the cost of installing power. Bi-directional IR control.

Atlona Advantages

MAXIMUM DISTANCE up to 230 ft (70 m)

POWER OVER CATEGORY CABLE (PoCc) No power is needed at receiver

EASY CONTROL Bi-directional IR compatible with third party control systems

SUPPORTS ULTRA HD (4Kx2K)

LOCKING HDMI PORTS for extra-secure connections and uninterrupted signals

SIDE-EXIT RJ45 ON UK MODELS to minimize category cable bend radius

CAPTIVE SCREW CONNECTOR for IR adds reliability and improves wire management

SUPPORTS ALL EMBEDDED AUDIO SIGNALS including Dolby TrueHD and DTS-HD Master Audio

UPGRADE IN THE FIELD via USB port

CEC PASS-THROUGH so it's easier to control the entire system

IR Wall Plate Product Options

Atlona HDBaseT RX HDMI 2-Gang US Decora Wall Plate w/IR [model no. **AT-HDWP-IR**]

Atlona HDBaseT RX HDMI 1-Gang UK Wall Plate w/IR [model no. **AT-HDWP-IR-UK**]

Related Products

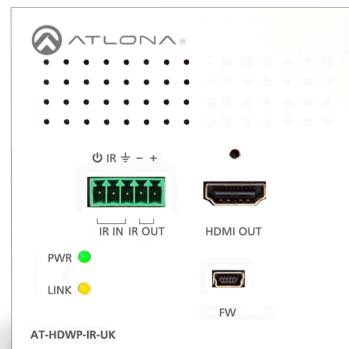
Atlona HDBaseT TX HDMI Transmitter w/IR [model no. **AT-HDTX-IR**]

Atlona 6 x 6 HDMI to HDBaseT Matrix Switcher [model no. **AT-PRO3HD66M**]

Atlona 4 x 4 HDMI to HDBaseT Matrix Switcher [model no. **AT-PRO3HD44M**]



[model no. AT-HDWP-IR Receiver]



[model no. AT-HDWP-IR-UK Receiver]
(UK-2-GANG WALLPLATE SHOWN)

Atlona HDBaseT HD Wall Plate Extender Collection

HDBaseT and power over category cable (PoCc) affordably extend high-resolution, reliable signals up to 230 feet (70 meters) in a stylish wall plate. PoCc eliminates the need for power at the wall plate, saving the cost of installing power. The ideal wall plate extender for spaces that require only local control.

Atlona Advantages

MAXIMUM DISTANCE up to 230 ft (70 m)

POWER OVER CATEGORY CABLE (POCC) No power is needed at receiver

SUPPORTS ULTRA HD (4Kx2K)

LOCKING HDMI PORTS for extra-secure connections and uninterrupted signals

SIDE-EXIT RJ45 ON UK MODELS to minimize category cable bend radius

SUPPORTS ALL EMBEDDED AUDIO SIGNALS including Dolby TrueHD and DTS-HD Master Audio

UPGRADE IN THE FIELD via USB port

CEC PASS-THROUGH so it's easier to control the entire system

HD Wall Plate Product Options

Atlona HDBaseT RX HDMI 2-Gang US Decora Wall Plate [model no. [AT-HDWP](#)]

Atlona HDBaseT RX HDMI 1-Gang UK Wall Plate [model no. [AT-HDWP-UK](#)]

Related Products

Atlona HDBaseT TX HDMI Transmitter [model no. [AT-HDXT](#)]

Atlona 2 x 8 HDMI to HDBaseT Distribution Amplifier [model no. [AT-HDCAT-8](#)]

Atlona 2 x 4 HDMI to HDBaseT Distribution Amplifier [model no. [AT-HDCAT-4](#)]

Atlona 6 x 6 HDMI to HDBaseT Matrix Switcher [model no. [AT-PRO3HD66M](#)]

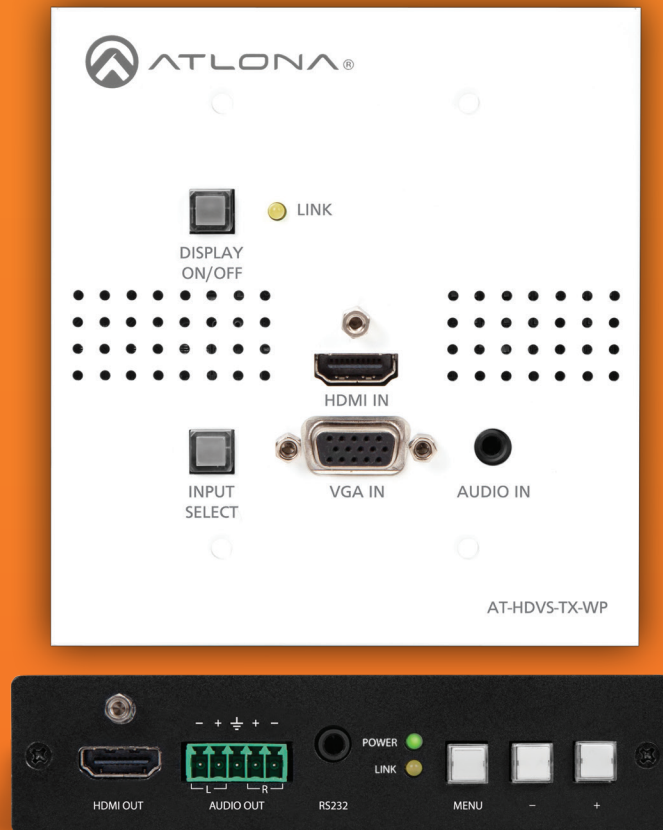
Atlona 4 x 4 HDMI to HDBaseT Matrix Switcher [model no. [AT-PRO3HD44M](#)]



[model no. AT-HDWP Receiver]



[model no. AT-HDWP-UK Receiver]
(UK-2-GANG WALLPLATE SHOWN)



Atlona HDVS Extender/Scaler Collection

Atlona's HDVS extender/scaler collection was designed to smooth the transition from analog to digital displays in schools and businesses. While some systems use HDMI computers, Blu-ray players, or document cameras, there are numerous VGA computers still in use, and this collection supports both. Together, these components can lower the cost of a complete, simple system with VGA and HDMI inputs and display control.

Atlona HDVS Extender/Scaler Collection

Small systems designed around HDVS transmitters and receivers are perfect for classrooms and small conference rooms. As part of larger and more complex applications these components enable HDMI and VGA/analog audio input to larger switchers. They enable HDBaseT distances on both inputs and outputs, and scaling/de-embedded audio. The RX can be used with any Atlona transmitter, HDCAT or PRO2HD or PRO3HD matrix if a scaler is required on a specific output.

Atlona Advantages

INPUTS HDMI and VGA (plus audio) on a single wall plate

USE FEWER CABLES HDMI and VGA/analog audio over a single category cable

SCALER HDMI output at receiver scaled to match the resolution of your display

DE-EMBEDDED AUDIO available as a balanced output. The HDMI signal going to the display also supports audio

INPUT SELECT OPTIONS Auto-select inputs based on last input used, front panel button, or by RS-232 control

DISPLAY CONTROL OPTIONS Use the display on/off button at TX wall plate

MAXIMUM DISTANCE up to 230 ft (70 m)

POWER OVER CATEGORY CABLE (PoC) requires power only at the receiver

WORLDWIDE USE US- and UK- compatible wall plates for global use

IMAGE CONTROL OPTIONS Full range of complete image controls including a variety of output resolutions to match your display

INPUT RESOLUTION Up to 1920x1200

USER-FRIENDLY SOFTWARE RS-232 commands for display control must be programmed with easy-to-use, included

software (requires a PC with RS-232 out or with a USB-to-serial converter and basic knowledge of RS-232 command structure)

HDVS Product Options

Order TX wall plate and RX receiver separately. TX not compatible with other current Atlona extender solutions.

Atlona HDMI + VGA/Audio HDBaseT Extender Wall Plate w/ Display Control (ships with US + UK wall plates) [model no. **AT-HDVS-TX-WP**]

Atlona HDMI HDBaseT Scaler Receiver [model no. **AT-HDVS-RX**]

Atlona HDMI (2) and VGA/Audio HDBaseT Extender Switcher w/Display Control [model no. **AT-HDVS-TX**]

Atlona HDMI + VGA/Audio HDBaseT Extender Wall Plate w/ Display Control [model no. **AT-HDTX-WP**]



[model no. HDVS-TX-WP Transmitter]
(UK-2-GANG WALLPLATE ALSO AVAILABLE)



[model no. AT-HDVS-RX]

Atlona HDVS Extender Wall Plate

AT-HDVS-TX-WP

Components can function as complete input and control within a simpler system. As part of larger and more complex applications these components enable HDMI and VGA/analog audio input to larger switchers.

HDVS transmitter wall plate is specifically designed to work with HDVS receiver. RS-232 features require use of both products.

Atlona Advantages

MAXIMUM DISTANCE up to 230 ft (70 m)

POWER OVER CATEGORY CABLE (PoC) requires power from the receiver

INPUT SELECT OPTIONS Select inputs automatically (based on last input used), front panel button, or by RS-232 control connected at receiver

USE FEWER CABLES HDMI and VGA/analog audio over a single category cable

DISPLAY CONTROL OPTIONS Use the display on/off button at TX wall plate (RS-232)

WORLDWIDE USE US- and UK-compatible wall plates for global use

HDVS Product Options

Order TX wall plate and RX receiver separately. TX not compatible with other current Atlona extender solutions.

Atlona HDMI + VGA/Audio HDBaseT Extender Wall Plate w/ Display Control (ships with US + UK wall plates) [model no. **AT-HDVS-TX-WP**]

Atlona HDMI HDBaseT Scaler Receiver [model no. **AT-HDVS-RX**]

Atlona HDMI (2) VGA/Audio HDBaseT Extender Switcher w/ Display Control [model no. **AT-HDVS-TX**]



[model no. HDVS-TX-WP Transmitter]



[model no. HDVS-TX-WP Transmitter]
(UK-2-GANG WALLPLATE SHOWN)

web

Visit atlona.com for more complete product information, including our latest catalog, data sheets and specs.

Atlona HDVS Receiver/Scaler

AT-HDVS-RX

Atlona's HDVS HDBaseT to HDMI receiver offers scaling and audio de-embedding in a single unit for simple installation. Whether the source is the HDVS wall plate, an HDBaseT transmitter, an Atlona HDBaseT distribution amplifier, or an Atlona PRO2HD or PRO3HD collection matrix switcher, the output is matched to the display it feeds. Complete image adjustment via RS-232 controls or front panel.

Atlona Advantages

MAXIMUM DISTANCE up to 230 ft (70 m)

POWER OVER CATEGORY CABLE (PoC) sends power to matching transmitter HDVS-WP

DE-EMBEDDED AUDIO available as a balanced output at AT-HDVS-RX. The HDMI signal going to the display also supports audio

IMAGE CONTROL OPTIONS Full range of complete image controls

INPUT RESOLUTION up to 1080p, 1920x1200

OUTPUT RESOLUTIONS to match your display up to 1080p or

1920x1200

HDVS Product Options

Order TX wall plate and RX receiver separately. TX not compatible with other current Atlona extender solutions.

Atlona HDMI + VGA/Audio HDBaseT Extender Wall Plate w/ Display Control (ships with US + UK wall plates)
[model no. **AT-HDVS-TX-WP**]

Atlona HDMI HDBaseT Scaler Receiver [model no. **AT-HDVS-RX**]



[model no. AT-HDVS-RX]



Atlona HDMI (2) and VGA/Audio HDBaseT Extender/Switcher w/Display Control

AT-HDVS-TX

Atlona's HDVS-TX helps to smooth the transition from analog to digital displays, allowing advanced HDMI display devices to be used with the many VGA computers still in use. It allows automatic switching between both HDMI and VGA inputs. digitizes, and transmits via HDBaseT. As part of a simple HDVS collection AV system it enables projector control.

Atlona Advantages

ANALOG TO DIGITAL

HDBASET AND POWER OVER CATEGORY CABLE (POCC) allow signal and power to 230 feet (70 meters) over a single category cable

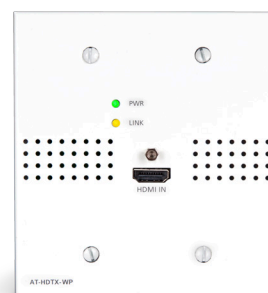
HDMI AND VGA up to 1080p/1920x1200

WORKS BEST when used with HDVS-RX

ENABLES PROJECTOR CONTROL from HDVS-TX

RS-232 input selection from 3rd party controller

3-WAY POWER PoCc to receiver, PoCc from receiver, and local power supply



Atlona HDMI + VGA/Audio HDBaseT Extender Wall Plate w/Display Control

AT-HDTX-WP

Atlona's HDTX-WP HDBaseT transmitter wall plate, paired with an Atlona HDVS receiver, allows the use of advanced HDMI display devices with existing VGA computers in simple, complete systems with input switching and control. This attractive wall plate simplifies installation because it can be powered either at the transmitter or from the receiver when used with HDVS-RX; so no power is needed at the transmitter.

Atlona Advantages

TRANSMITS HDMI SIGNALS up to 230 feet (70 meters)

HDMI UP TO ULTRA HD 4Kx2K

US 2-GANG AND UK WALL PLATES available

3-WAY POWER PoCc to receiver, PoCc from receiver, or local power supply



Atlona DVI Passive Extender over Category Cable

AT-DVI60SRS

The value extender for longer distances via inexpensive category cable.

Atlona Advantages

LONGER DISTANCES Delivers up to 1920x1200 at 160 ft (50 m) or 180 ft (55 m) at lower resolutions such as 1024x768



Atlona DVI Passive Extender over Category Cable

AT-DVI15SRS

The value extender for great video at moderate distances via inexpensive category cable.

Atlona Advantages

1080P AT 50 FT (15 M) OR 100 FT (30 M) at lower resolutions such as 1280x1024



Atlona Component and 2-Output Mono Audio Extender over Category Cable

AT-COMP150SR

The extender for high definition video at long range via inexpensive category cable.

Atlona Advantages

LONG DISTANCE DELIVERS up to 1080i @ 600 ft (180 m)

SUPPORTS NTSC/PAL up to 1000 ft (300 m)

NO POWER REQUIRED Installs easily without power to the unit



Atlona VGA w/Audio and RS-232 Extender over Category Cable

AT-VGA-RS300SRS

The extender for high-resolution VGA over extremely long distances.

Atlona Advantages

DELIVERS HIGH-DEFINITION RESOLUTION at Extra Long Range Up to 1920x1200 @ 1000 ft (300 m)

AUDIO OPTIONS 2-channel analog audio on 3.5 mm or S/PDIF digital audio

CONTROL MADE EASY Bi-directional RS-232 control



Atlona VGA w/2-Channel Audio Pair over Category Cable

AT-2VGA300SL and AT-VGA300RL

A high-value transmitter that offers loop-out VGA for a local monitor, and includes two separate category cable outputs for two receivers.

Atlona Advantages

DELIVERS HIGH DEFINITION RESOLUTION up to 1600x1200 at 1000 ft (300 m)

SIMPLIFIED PLANNING When multiple receivers are required; senders and receivers sold separately



Atlona VGA w/2-Channel Audio Extender Pair over Category Cable

AT-RGB45SR

Our extender pair allows high-resolution video over long distances.

Atlona Advantages

DELIVERS HIGH-DEFINITION RESOLUTION up to 1600x1200 at 150 ft (45 m)

DETECTS NATIVE RESOLUTION of connected displays automatically; passes DDC



Atlona VGA Pair over Category Cable

AT-VGA100-R and AT-VGA100-S

Our VGA transmitter and receiver pairs simplify system planning by allowing separate purchases of senders and receivers.

Atlona Advantages

FLEXIBLE FORM FACTOR box or wall plate

NO POWER REQUIRED Installs easily without power to the unit

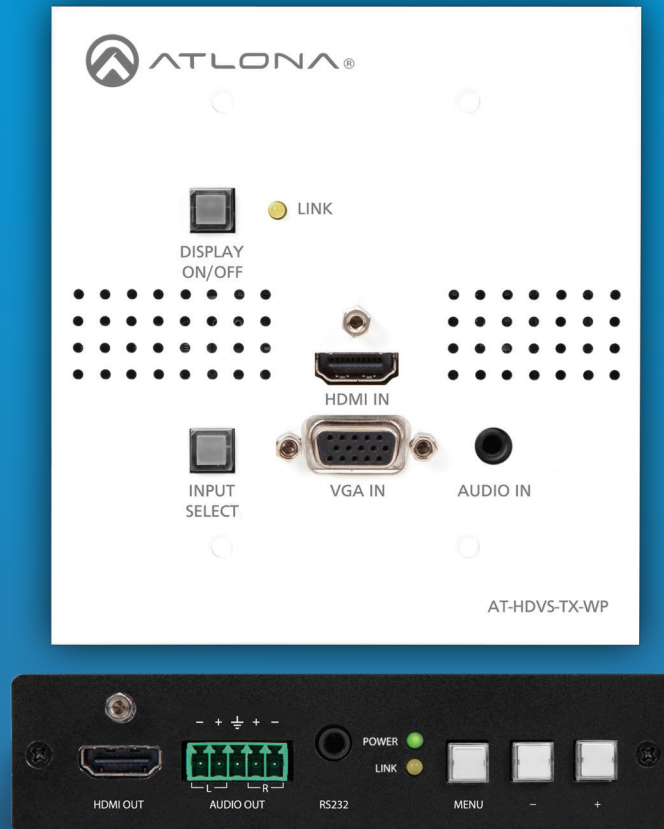
Related Products

Atlona Passive VGA Wall Plate Receiver over Category Cable [model no. **AT-WPVGA-R**]

Atlona Passive VGA Wall Plate Transmitter over Category Cable [model no. **AT-WPVGA-S**]

Converters and Scalars

Atlona converters and scalars help overcome the inherent compatibility and performance challenges of integrating and connecting various devices and signal formats; and help deliver the best possible performance from AV systems.



Conversions Made Simple

With the alphabet soup of connectivity standards, resolutions and digital/analog conversions are not just confusing, they create obstacles in system design. Atlona solutions can simplify interchange between these standards. Our scalars enable seamless interchange between sources and displays with disparate resolutions. Our converters help ease the transition from analog to digital.

SDI The digital standard for broadcast and production
 HDMI and DVI The digital standard for consumer electronics and PCs
 VGA The analog standard for PCs
 Component The analog standard for consumer electronics
 Composite Video The original analog standard for video

web

Visit atlona.com for more complete product information, including our latest catalog, data sheets and specs.

Convert HDMI and VGA to HDBaseT

Atlona HDVS Extender/Scaler Collection

As part of larger and more complex applications these components enable HDMI and VGA/analog audio input to larger switchers. They enable HDBaseT distances on both inputs and outputs, and scaling/de-embedded audio. The RX can be used with any Atlona transmitter, HDCAT or PRO2 or PRO3 matrix if a scaler is required

on a specific output.

Atlona Advantages

INPUTS HDMI AND VGA (plus audio) on a single wall plate

USE FEWER CABLES HDMI and VGA/analog audio over a single category cable

SCALER HDMI output at receiver scaled to match the resolution of your display

DE-EMBEDDED AUDIO available as a balanced output. The HDMI signal going to the display also supports audio

INPUT SELECT OPTIONS Auto-select inputs based on last input used, front panel button, or by RS-232 control

DISPLAY CONTROL OPTIONS Use the display on/off button at TX wall plate

MAXIMUM DISTANCE up to 230 ft (70 m)

POWER OVER CATEGORY CABLE (PoCC) requires power only at the receiver

WORLDWIDE USE US- and UK- compatible wall plates for global use

IMAGE CONTROL OPTIONS Full range of complete image controls including a variety of output resolutions to match your display

INPUT RESOLUTION Up to 1920x1200

USER-FRIENDLY SOFTWARE RS-232 commands for display control must be programmed with easy-to-use, included software (requires a PC with RS-232 out or with a USB-to-serial converter and basic knowledge of RS-232 command structure)

HDVS Product Options

Order TX wall plate and RX receiver separately. TX not compatible with other current Atlona extender solutions.

Atlona HDMI + VGA/Audio HDBaseT Extender Wall Plate w/ Display Control (ships with US + UK wall plates) [model no. [AT-HDVS-TX-WP](#)]

Atlona HDMI HDBaseT Scaler Receiver [model no. [AT-HDVS-RX](#)]



[model no. AT-HDVS-TX-WP Transmitter]
(UK-2-GANG WALLPLATE ALSO AVAILABLE)



[model no. AT-HDVS-RX Receiver]

Convert to SDI

Atlona HDMI to SDI Converter

AT-HD-3GSDI

Easily converts HDMI to SDI without loss in real time. Combine with AT-PWUSB cable for convenient optional USB power

Atlona Advantages

LOSSLESS Converts HDMI to 3G-SDI, HD-SDI, and SD-SDI

AUDIO SUPPORT 8 channels; 7.1 or 5.1-channel audio

AUTO-DETECT offers 3G/HD/SD-SDI auto detection

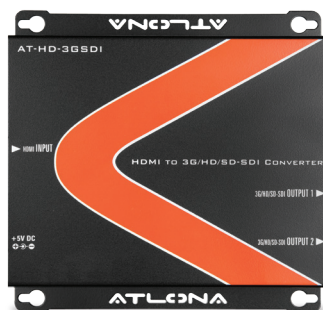
HDCP Does not convert copy-protected sources

3G FORMATS (SMPTE 425M, Level A) Supports 1080p @50/59. 94/60Hz (422), 1080p @24/25/30Hz (444), 1080i @50/59. 94/60Hz (444), 720p @24/25/50/59. 94/60Hz (444).

HIGH-DEFINITION (HD) FORMATS Supports 1080i @50/59. 94/60Hz, 1035i @50/59. 94/60Hz, 720p @50/59. 94/60Hz

STANDARD-DEFINITION (SD) FORMATS Supports NTSC @59. 94Hz, PAL @50Hz

DUAL OUTPUT Offers two, low-jitter SDI outputs



[model no. AT-HD-3GSDI]

Convert to HDMI and DVI

Atlona SDI to HDMI Converter w/Analog Audio Output

AT-3GSDI-HD2

Easily converts SDI video formats to HDMI to make sources and displays compatible. RCA audio outputs make it ideal for external sound systems.

Atlona Advantages

SYSTEM EXPANDABILITY SDI output allows both display on local HDMI monitor and SDI feed for recording

COMPATIBILITY Works with 3G-SDI, HD-SDI, and SD-SDI

LOSSLESS CONVERSION Perfect conversion from digital to digital



[model no. AT-3GSDI-HD2]

web

Visit atlona.com for more complete product information, including our latest catalog, data sheets and specs.



Atlona HDMI to HDMI Scaler w/Frame-Rate Conversion

AT-HD560

Our HDMI to HDMI scaler matches input resolutions of monitors with different native resolutions in multi-display designs so that sources and displays are compatible.

Atlona Advantages

IMAGE ENHANCEMENT Allows adjustments of output resolution, color, brightness, and other video settings

POWERFUL AUTO-SCALING Automatically detects preferred resolution of connected display

AUDIO SUPPORT EMBEDS digital and analog audio onto HDMI. Outputs audio to HDMI and TOSLink 3.5 mm jacks simultaneously



Atlona HDMI to HDMI Scaler

AT-HD550

Our value-priced HDMI scaler matches input resolutions of monitors with different native resolutions in multi-display designs so that sources and displays are compatible, optimized for systems that don't require picture enhancement control.

Atlona Advantages

POWERFUL AUTO-SCALING Automatically detects preferred resolution of connected display and scales video from 480i to 1080p

OPTIONAL USB POWER Convenient when combined with the AT-PWUSB cable



Atlona DVI to HDMI Converter w/Analog/Digital Audio to HDMI Converter/ Embedder

AT-HD610

Use the AT-HD610 to accurately embed analog or digital audio to a DVI signal for input to an HDMI switch or monitor

Atlona Advantages

AUDIO SUPPORT Embeds digital or analog audio with DVI video onto HDMI

AUDIO JACKS Has S/PDIF or 3.5 mm stereo inputs

EDID Learns the EDID from connected display to ensure compatible installation



Atlona VGA and Stereo Audio to HDMI Converter/Scaler

AT-HD510VGA

Easily and reliably connects a VGA PC or component video to an HDMI display. It automatically scales most native display resolutions up to 1080p or 1920x1200.

Atlona Advantages

COMPONENT VIDEO Converts analog sources to HDMI

LOCAL MONITOR Includes VGA loop-out to drive local monitor

FULL AUDIO SUPPORT Embeds audio with VGA onto HDMI. Outputs to HDMI, TOSLink, and 3.5 mm jacks

COMPREHENSIVE PICTURE CONTROL Allows adjustment of contrast, brightness, hue, saturation, sharpness, RGB (color balance) level, and aspect ratio size



Atlona VGA to HDMI Converter

w/Built-In Scaler

AT-HD500

Just like the AT-HD510VGA, it easily and reliably connects a VGA PC to an HDMI display, but without a local monitor output. It automatically scales most native display resolutions up to 1080p or 1920x1200. Ideal for laptops.

Atlona Advantages

FULL AUDIO SUPPORT Embeds audio with VGA onto HDMI. Outputs to HDMI, TosLink and 3.5 mm jacks

COMPREHENSIVE PICTURE CONTROL

Allows adjustment of contrast, brightness, hue, saturation, sharpness, RGB (color balance) level, and aspect ratio size

Related Products

Atlona VGA to DVI Converter w/Built-In Scaler [model no. [AT-HD500DVI](#)]



Atlona Composite and S-Video w/Audio to HDMI Converter

AT-HD520

Easily converts and scales NTSC/PAL video to native resolution of HDMI display to match display to composite and S-video inputs

Atlona Advantages

FULL AUDIO SUPPORT Embeds analog audio onto HDMI via 3.5 mm jacks

POWERFUL SCALING Automatically detects preferred resolution of connected HDMI high-definition display and scales video. Supports resolutions up to 1920x1200

IMAGE PREFERENCES Allows adjustments of output resolution, color, brightness, and other video settings



Atlona Composite Video and Stereo Audio to HDMI Converter/Scaler

AT-HD120

Our value-priced composite video converter offers the same engineering as AT-HD520, optimized for systems that don't require S-video input or image enhancement.

Atlona Advantages

PLUG AND PLAY Combine a composite video (BNC) signal and stereo audio signal into a signal that passes over a single HDMI cable



Convert to VGA and Component Video

Atlona HDMI to VGA/Component and Analog Audio Converter

AT-HD420

Converts HDMI to VGA. Not HDCP compliant – doesn't support pre-recorded HDMI sources such as Blu-ray and set-top boxes.

Atlona Advantages

AUDIO DE-EMBEDDING De-embeds PCM audio from HDMI to 2-channel audio on a 3.5 mm jack

DIGITAL TO ANALOG CONVERSION Allows use of HDMI sources with analog displays

Atlona DVI to VGA/Component Scaler

AT-PC530

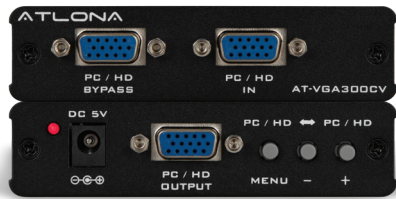
Converts DVI to VGA.

Atlona Advantages

IMAGE ENHANCEMENT Allows adjustments of output resolution, color, brightness, and other video settings

DVI LOOP-OUT Allows connection to a local DVI monitor plus a separate VGA display

COMPATIBILITY AT-PC530 is not compatible with Mac computers



Atlona VGA to Component or Component to VGA Converter/Scaler

AT- VGA300CV

This versatile converter and scaler allows connection of a VGA source to a component display or vice-versa.

Atlona Advantages

IMAGE ENHANCEMENT Allows adjustments of output resolution, color, brightness, and other video settings

POWERFUL AUTO-SCALING Automatically detects preferred resolution of connected display from 480i to 1080p and scales video from most formats

MULTIPLE MONITORS Allows connection of a local VGA monitor plus a separate component display or vice versa



Atlona Composite or S-Video to VGA/Component Converter/Scaler

AT- AVS100

The converter and scaler for analog formats, it simplifies switching when mixing composite/S-video sources with displays that support only VGA/component signals.

Atlona Advantages

OPTIONAL USB POWER Convenient when combined with the AT-PWUSB cable

MULTI-REGION CONVERSION Supports a variety of sources with NTSC (480i) or PAL(576i)



Atlona Composite Video (BNC) to VGA Converter/Scaler

AT-RGB110

The converter and scaler for use with inverted cameras, as it flips the input image vertically.

Atlona Advantages

SIMPLIFY SYSTEM DESIGN Allows viewing of composite video on VGA display

MULTI-REGION CONVERSION Supports a variety of sources with NTSC (480i) or PAL(576i)



Atlona HDMI to Composite and S-Video Down-Converter

AT-HD530

The solution for spaces with older displays—allows the continued use of older composite/S-video displays with new HDMI and DVI sources. It's perfect for images from HDMI cameras.

Atlona Advantages

HDCP Not HDCP compliant and won't function with standard HDMI sources such as Blu-rays and set-top boxes

MULTI-REGION CONVERSION Supports a variety of sources with PAL or NTSC displays

Audio

Atlona audio solutions are purpose-built to satisfy the unique requirements of integrating and delivering high-performance audio signal distribution, conversion, and amplification in residential and commercial AV systems.



The Little Powerhouse Converter

The new Atlona AT-HD-M2C converts multi-channel digital audio formats such as Dolby TrueHD® or DTS-HD Master Audio™ into 2-channel audio to ensure seamless compatibility with displays, AV receivers, or distribution amplifiers that only accept 2-channel input. All Dolby and DTS codecs are converted to 2 channels including newer Dolby Digital Plus®; ideal for UltraViolet®, Vudu®, HBO-GO®, Netflix®, Xbox® game consoles, Play Station® game consoles, and other contemporary devices using this format. Status lights identify the specific incoming signal format at a glance. Multi-channel EDID eliminates the management of multiple audio formats. Ideal for installations with multiple displays that have incompatible audio formats. A variety of audio outputs (S/PDIF, TosLink®, HDMI, analog) support 2-channel audio devices.

web

Visit atlona.com for more complete product information, including our latest catalog, data sheets and specs.

Atlona HDMI Multi-Channel to 2-Channel Audio Converter

With today's variety of digital audio formats, guaranteeing compatibility between zones can be difficult. Solve the problem with our full-featured multi-channel to stereo audio converter. It receives any standard HDMI audio signal from Blu-ray, set-top box, or game console, and converts the multi-channel audio to stereo. Ideal for use in multi-display installations that include both multi-channel and two-channel playback, maintaining multi-channel compatibility (EDID) so theaters receive the ultimate audio experience while flat panel audio remains 2-channel.

Atlona Advantage

DOLBY AND DTS SUPPORT Converts audio such as DTS Digital and Dolby Digital 5.1 (including Dolby Digital Plus DTS-HD Master Audio and Dolby TrueHD) into 2-channel.

EDID MADE EASY Modifies display 2-channel EDID to multi-channel ensuring that all sources on a matrix switch will always output multi-channel audio.

OUTPUT CONNECTORS Features HDMI (video + 2-channel audio) output, S/PDIF and TOSLink digital audio, and RCA analog audio.

INDICATOR LIGHTS Uses LED indicators to identify actual format of incoming audio.



[model no. AT-HD-M2C]



Atlona Stereo/Mono Audio Amplifier

AT-PA100-G2

An affordable, efficient class D amplifier that uses less energy and creates less heat. Powerful functionality in a small form factor that's just right for limited space. Uses less power than more elaborate amplifiers but can be easily hidden behind a display.

Atlona Advantages

INTEGRATION-READY CONTROL
Complete control via RS-232, IR, and front-mounted control panel

20 WATTS per channel

MIC INPUT Layers voice input over program audio using a microphone input compatible with condenser, dynamic, or wireless microphones

SUPER COMPACT Fits easily in smaller spaces

MOUNTING EARS included

OPTIONAL IR REMOTE CONTROL KIT for input channel, mute, mic control, volume, and EQ

OUTPUT CONNECTOR captive screw speaker connector

INPUT CONNECTORS 1 x captive screw mic, 2 x RCA, 1 x 3.5 mm

Related Product

Atlona Remote Control Kit [model no. AT-PA1-IR-G2]



Atlona HDMI Audio De-Embedder w/3D

AT-HD570

Our audio de-embedder separates audio from HDMI to TOSLink and 3.5 mm jacks.

Atlona Advantages

DIGITAL OUTPUTS Transmits up to multi-channel DTS 5.1 and Dolby Digital signals

ANALOG OUTPUTS Transmits up to 7.1 uncompressed LPCM multi-channel via four 3.5 mm jacks



Atlona Optical/Coaxial Digital Converter

AT-AD2

Converts and extends TOSLink (optical) to S/PDIF (coax) or S/PDIF to TOSLink digital audio.

Atlona Advantages

LOOP OUT Outputs both TOSLink and S/PDIF regardless of input format

OPTIONAL USB POWER Convenient when combined with AT-PWUSB cable

Test Equipment

Atlona test kits make it easy to identify, diagnose, and remedy connectivity and compatibility issues in the field.



Identify, Diagnose, and Remedy

Atlona test and troubleshooting solutions save integrators and installers cost and labor. Complex installations can be overwhelming, but with our all-in-one installation test kit, troubleshooting couldn't be easier.

Atlona Installation Test Kit

KIT-PROHD3

We've assembled our best and most popular HDMI diagnostic equipment in a high-quality water-resistant case for easy transport. All our test devices are also available for individual purchase.

Kit Includes

PORTABLE HDMI Signal Generator [model no. AT-HD800]

HDMI EDID Recorder, Writer, and Hot Plug Simulator w/RS-232 Control [model no. AT-HDSync]

7-INCH PRO HD MONITOR w/HDMI, VGA and Component Inputs [model no. AT-DIS7-PROHD]

4-HOUR PORTABLE BATTERY for use w/AT-DIS7-PROHD [model no. AT-BAT-DIS7PRO]

CARRYING CASE





Atlona 7-Inch PRO HD Monitor w/HDMI, VGA and Component Inputs

AT-DIS7-PROHD

Our PROHD monitor displays video signals and test patterns for easy troubleshooting, and outputs audio from speakers. It emulates displays without actually using the display to confirm the proper operation of switching and cabling.

Atlona Advantages

VIDEO AND CABLE TESTING DISPLAYS signals with resolutions from 480i up to 1080p (640x480 to 1920x1200)

EASILY RACK-MOUNTABLE Installs permanently with optional rack mount

DISPLAYS COMPONENT SIGNALS with supplied break-out cable

AUDIO SPEAKERS to check for embedded audio

Related Products

Atlona 4-Hour Portable Battery
[model no. AT-BAT-DIS7PRO]

Atlona Rack Ears [model no. AT-RK-DIS7PRO]



Atlona HDMI EDID Recorder, Writer, and Hot Plug Simulator w/RS-232 Control

AT-HDSYNC

Records, writes EDID, and simulates hot plug connections to solve troublesome installation issues.

Atlona Advantages

RS-232 INTERFACE Allows a PC to read and review EDID when connected via RS-232 cable (not supplied)

HOT PLUG Generates 5V to compensate for source with low-voltage hot-plug signals



Atlona Portable HDMI Signal Generator

AT-HD800

Our signal generator makes it easy to diagnose incompatibilities in the field. An EDID reading function simplifies diagnosis, and optional USB power adds flexibility.

Atlona Advantages

GENERATES 13 TEST SIGNALS with resolutions from 480i (including 576i/p) to 1080p at 50Hz and 60Hz, as well as 1080p at 24Hz. Includes three common modes of 3D testing. Not all patterns available at all resolutions

PORTABLE DESIGN Small size, battery power, and an included protective rubber jacket

OPTIONAL USB POWER Combine with the AT-PWUSB power cable for additional flexibility

Cables and Adapters

Atlona cables and adapters are precision-engineered to maximize signal reliability and integrity and are available in a wide variety of formats, lengths, and configurations that have been optimized for system integrators and installers.



Atlona LinkConnect Captive Screw Cable Collection

Atlona's captive screw cable collection features a thoughtful modification that installers and integrators asked for: pre-stripped cables that reduce excess cable lengths. This collection features connections designed for use with captive screw connectors, pre-stripped at the opposite ends so they can be easily inserted for more secure, direct contact with the conductor.

web

Visit atlona.com for more complete product information, including our latest catalog, data sheets and specs.



Atlona LinkConnect Captive Screw 2-Channel Audio Cable

AT-LC-CS-2CH-2M

High-performance cables with support for 2-channel audio, designed for use with captive screw connectors and pre-stripped at the opposite ends so they can be easily inserted for more secure contact with the conductor.



Atlona LinkConnect Captive Screw RS-232 Cable

AT-LC-CS-RS232-2M

High-performance cables with support for RS-232 control, designed for use with captive screw connectors and pre-stripped at the opposite ends so they can be easily inserted for more secure contact with the conductor.



Atlona LinkConnect Captive Screw IR Cable

AT-LC-CS-IR-2M

High-performance cables with support for IR control, designed for use with captive screw connectors and pre-stripped at the opposite ends so they can be easily inserted for more secure contact with the conductor.

Couplers and Adapters



Atlona HDMI Equalizer

AT-HDMI-EQ2

Our value-engineered equalizer corrects the problems caused by long cables, and increases signal range up to 100 feet (30 meters). Equalization extends both input and output up to 50 feet (15 meters) each, for a total of 100 feet (30 meters) without signal degradation. Supports audio up to including DTS-HD Master Audio and Dolby TrueHD, plus 3D, Dolby and DTS.



Atlona HDMI Male to DVI Female Locking Adapter

AT14050

Patented technology for the most reliable DVI to HDMI adapter on the market. These adapters feature locking port connections to ensure system stability by locking down on both ends; designed for devices with a threaded hole above the HDMI port.



Atlona HDMI Female to DVI Male Adapter

AT14041

Reliably converts HDMI to DVI.



Atlona LinkConnect HDMI Cable Collection

Atlona's LinkConnect collection of cables provides a better video and audio experience, with the latest HDMI connectivity and support for all current HDMI formats. Our high-performance cables minimize sparkles caused by insufficient bandwidth and they work at the highest resolutions available and for longer distances. High-density braid and foil shields reduce audio and video distortions from EMI and RFI. Certified High Speed with Internet.

web

Visit atlona.com for more complete product information, including our latest catalog, data sheets and specs.



Atlona LinkConnect Pro Select Series HDMI Cable

AT-PRO-LCS

Designed specifically for commercial and large residential installations, with active amplification for extended distances up to 50 feet (15 meters), as well as cUL and UL CM certification for in-wall installation.

Atlona Advantages

FULL CONNECTIVITY Ethernet and Audio Return Channel (ARC)

HIGH-QUALITY CONSTRUCTION Oxygen-free copper conductors with triple shielding

ALL HDMI FORMATS Certified to 10.2 Gbps

UL CERTIFICATION CL2/CM

AVAILABLE LENGTHS 20' / 30' / 50' (6m / 9m / 15m)



Atlona LinkConnect HDMI Cable

AT-LC

Our LinkConnect cables offer the latest HDMI connectivity, and support all current HDMI formats.

Atlona Advantages

FULL CONNECTIVITY Designed for Ethernet and Audio Return Channel (ARC)

HIGH-QUALITY CONSTRUCTION Oxygen-free copper conductors with triple shielding

ALL HDMI FORMATS Certified to 10.2 Gbps

UL CERTIFICATION CL2/CM

AVAILABLE LENGTHS 1.5' / 4' / 8' / 12' (.45m / 1.2m / 2.4m / 3.6m)



Atlona LinkConnect Thin High Speed HDMI Cable

AT-LCT

Ideal for final connection in high-visibility areas, this thin cable has a paintable jacket and a discreet and elegant look. Greater flexibility makes it ideal for tight turns and hard angles.

Atlona Advantages

THIN WIRE for flexibility and low profile

ADVANCED CHIP TECHNOLOGY LCT-8, -12, and -16 cables boost signal strength for greater stability

AVAILABLE LENGTHS 4' / 8' / 12' / 16' (1.2m / 2.4m / 3.6m / 4.8m)

Get CONNECTED

For more information about products featured in this catalog or any of Atlona's award-winning solutions, visit atlona.com.

Contact your Atlona representative by calling
1-877-536-3976 (U.S. toll free)
1-408-962-0515 (International).



ATLONA
Connecting Technology

GLOBAL HEADQUARTERS

70 Daggett Drive, San Jose, CA 95134 • 408.962.0515 • 877.536.3976

atlona.com

FALLCAT13

